

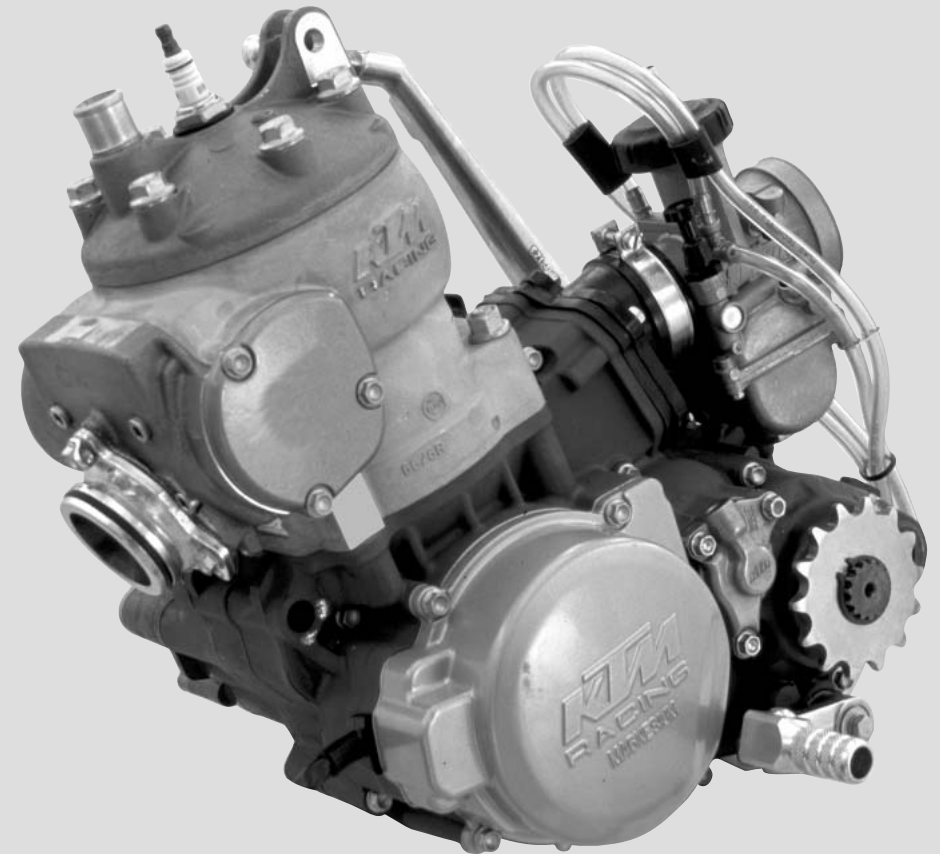
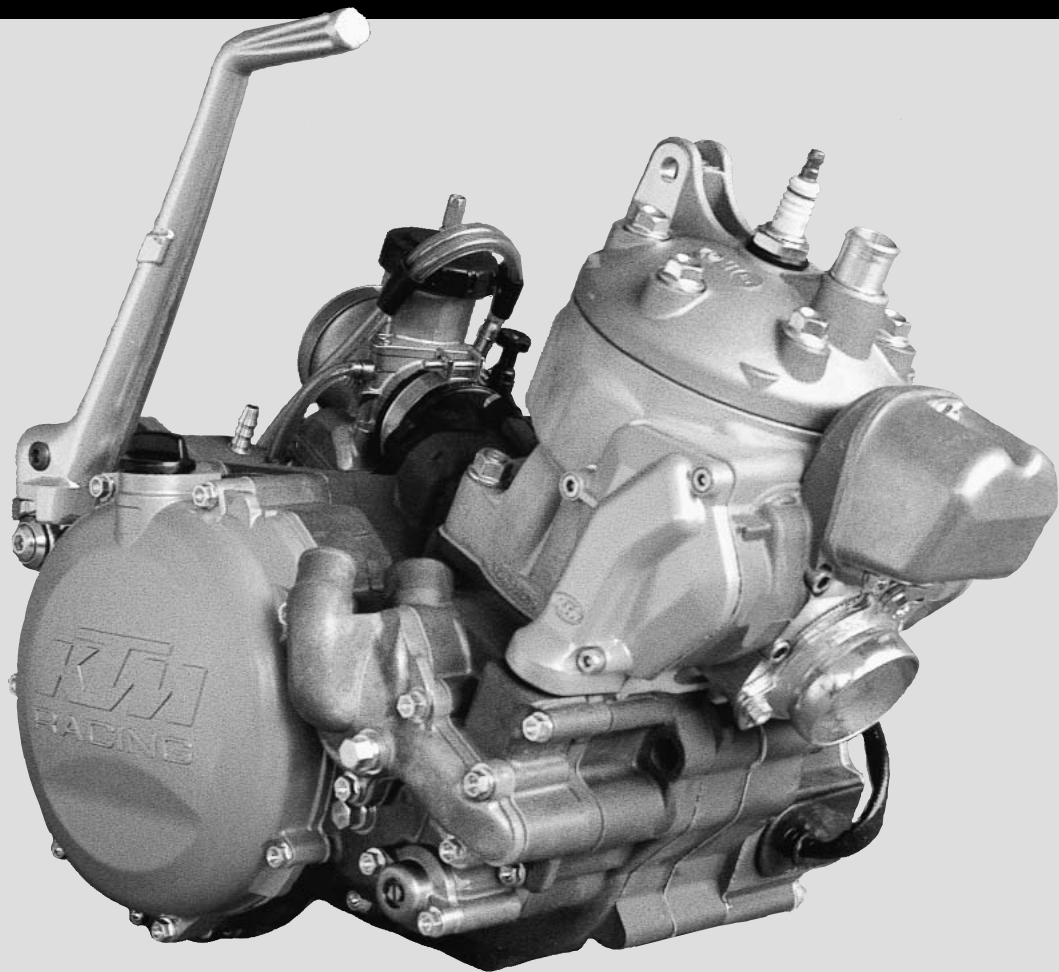
250/300/380 SX, MXC, EXC

KTM
SPORTMOTORCYCLES

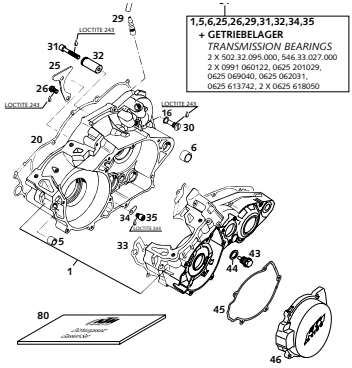
ERSATZTEILKATALOG
MOTOR

SPARE PARTS MANUAL
ENGINE

2001

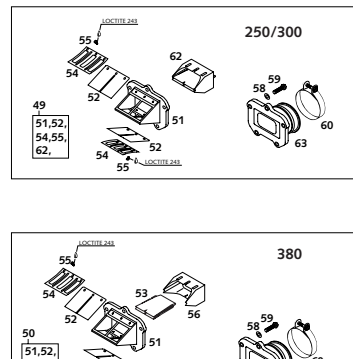


MOTORGEHÄUSE
ENGINE CASE



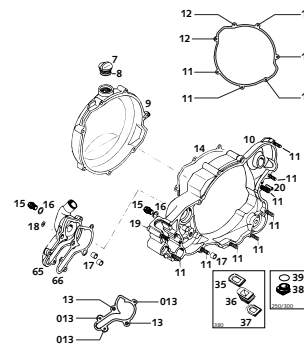
SEITE
Page
3

MEMBRANGEHÄUSE
REED VALVE CASE



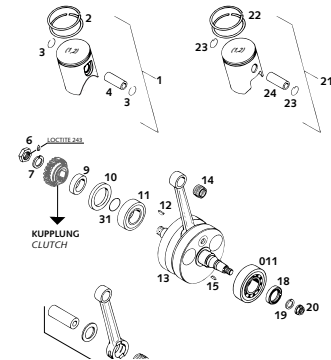
SEITE
Page
4

KUPPLUNGSDECKEL
CLUTCH COVER



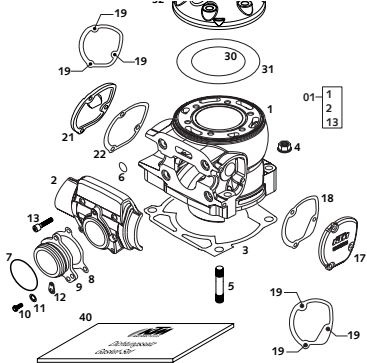
SEITE
Page
5

KURBELWELLE, KOLBEN
CRANKSHAFT, PISTON



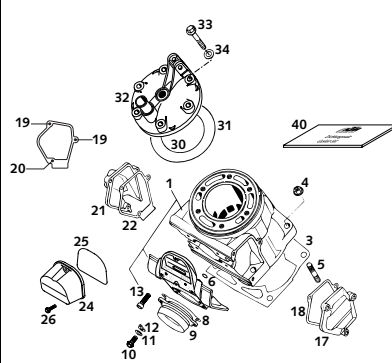
SEITE
Page
6

ZYLINDER 250/300
CYLINDER 250/300



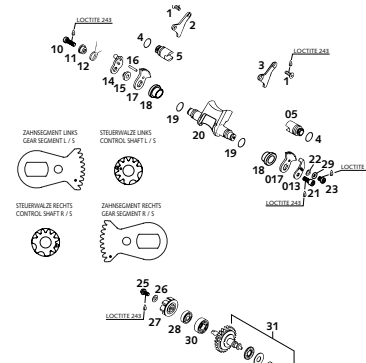
SEITE
Page
8

ZYLINDER 380
CYLINDER 380



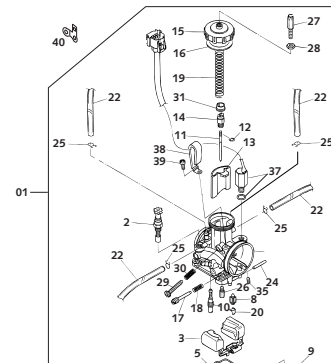
SEITE
Page
9

AUSLASSTEUERUNG
TIMING VALVE CONTROL



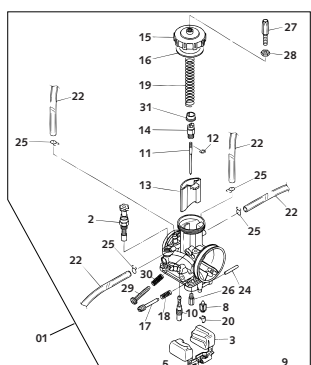
SEITE
Page
10

VERGASER KEIHIN PWK 38AG PJ
CARURETOR KEIHIN PWK 38 AG PJ



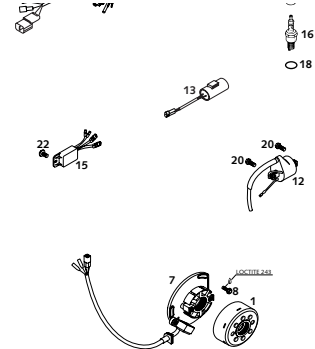
SEITE
Page
12

VERGASER KEIHIN PWK 38 AG
CARBURETOR KEIHIN PWK 38 AG



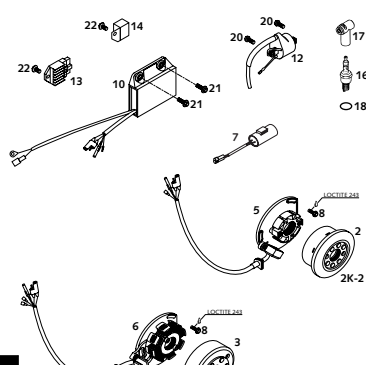
SEITE
Page
14

ZÜNDANLAGE KOKUSAN 250 SX
IGNITION SYSTEM KOKUSAN 250 SX



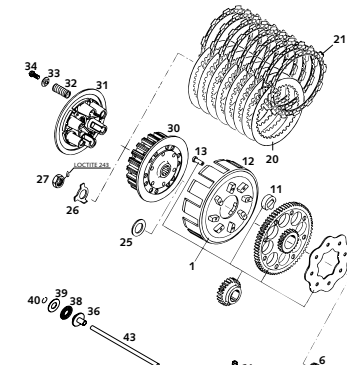
SEITE
Page
16

ZÜNDANLAGE KOKUSAN
IGNITION SYSTEM KOKUSAN



SEITE
Page
17

KUPPLUNG
CLUTCH



SEITE
Page
18

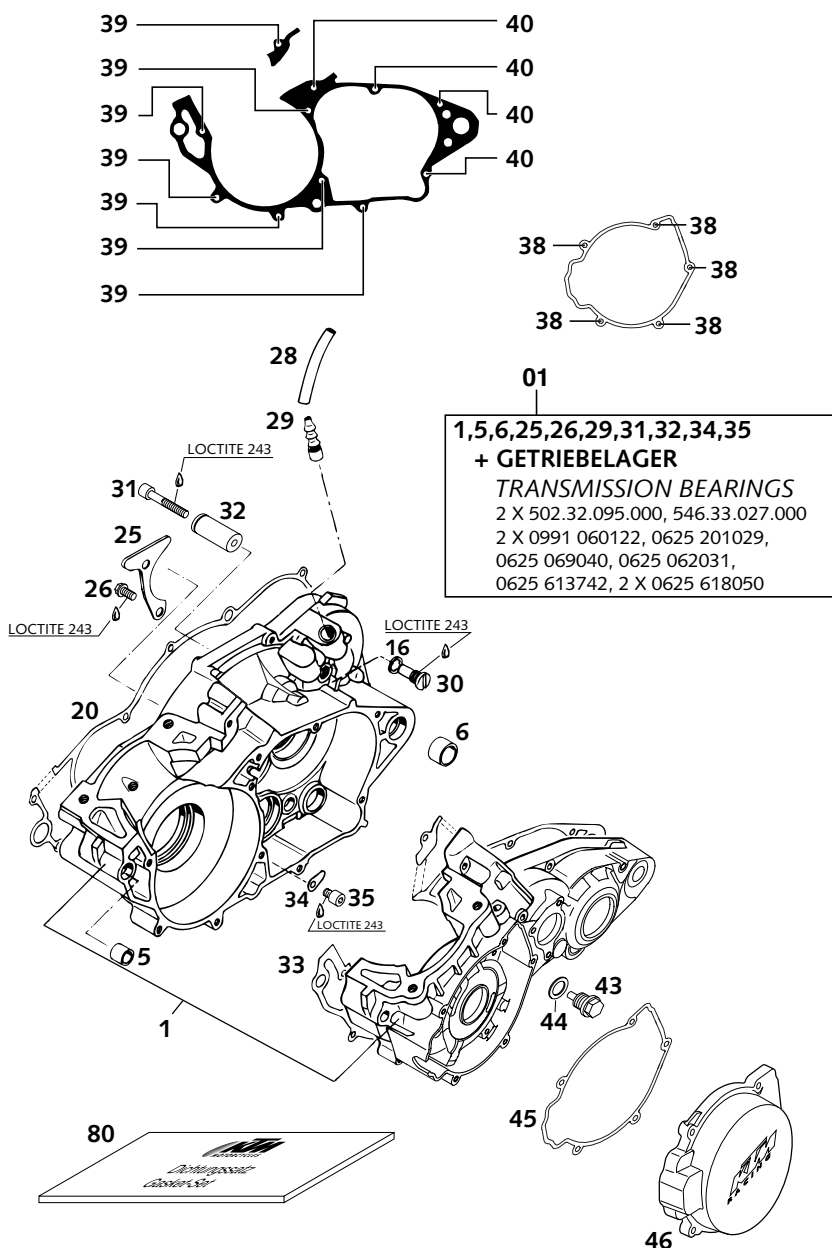


FIG	TEILNR/PARTNR	BEZEICHNUNG	DESCRIPTION	QTY
01	547.30.000.144	MOTERGEHÄUSE KPL. MIT LAGER'00	ENGINE CASE CPL.W.TRAN.BEAR'00	1
5	546.30.027.000	PASSBÜCHSE 13,8X11X12	DOWEL BUSHING 13,8X11X12	1
6	501.30.027.000	PASSHÜLSE 19 X15,1X12	DOWEL 19 X15,1X12	1
16	580.38.032.110	CU-DICHTRING 9 X 13 X 1	CU-SEAL RING 9 X 13 X1	1
20	546.30.025.100	KUPLUNGSDECKELDICHTUNG 0,5MM	CLUTCH COVER GASKET 0,5MM	1
25	546.30.017.000	HALTEBLECH	RETAINING PLATE	1
26	0015 060123	SK.BUNDSCHRAUBE M 6X12 SW=8	HH COLLAR SCREW M 6X12 WS=8	2
28	550.07.016.001	SCHLAUCH 7X10 PER METER	PVC-HOSE 7X10 PER METER	0,25
29	546.30.022.000	ENTLÜFTUNGSSTUTZEN '94	BLEEDER FLANGE '94	1
30	545.30.001.150	FLACHKOPFSCHRAUBE M.ZAPFEN	FLAT HEAD SCREW WITH PIN	1
31	0912 060404	ISK.SCHRAUBE DIN0912-M 6X40	AH SCREW DIN0912-M 6X40	1
32	590.33.018.000	LAGERZAPFEN 2000	BEARING PIN 6X17X44 2000	1
33	546.30.039.200	GEHÄUSEDICHT. 0,5MM 250-380'98	CASE GASKET 0,5MM 250-380'98	1
34	546.34.049.000	HALTEBLECH	RETAINING PLATE	2
35	0912 060083	ISK.SCHRAUBE DIN0912-M 6X 8	AH SCREW DIN0912-M 6X 8	2
38	0015 050163	SK.BUNDSCHRAUBE M 5X16 SW=8	HH COLLAR SCREW M 5X16 WS=8	5
39	0015 060453	SK.BUNDSCHRAUBE M 6X45 SW=8	HH COLLAR SCREW M 6X45 WS=8	7
40	0015 060603	SK.BUNDSCHRAUBE M 6X60 SW=8	HH COLLAR SCREW M 6X60 WS=8	4
43	580.30.021.000	ÖLABLASSCHR.B.M.MAGNET M12X1,5	OILDRAIN PLUG W.MAGNET M12X1,5	1
44	580.38.022.000	CU-DICHTRING DIN7603-12X18X1,5	CU-SEAL RING DIN7603-12X18X1,5	1
45	547.30.040.100	ZÜNDUNGSDECKELDICHT.0,5MM'2000	IGNIT.COVER GASKET 0,5MM '2000	1
46*	547.30.002.100/98	ZÜNDUNGSDECKEL 250-380 2001	IGNITION COVER 250-380 2001	1
80	546.30.099.000	DICHTUNGSSATZ 250-380 '99-'01	GASKET SET 250-380 '99-'01	1

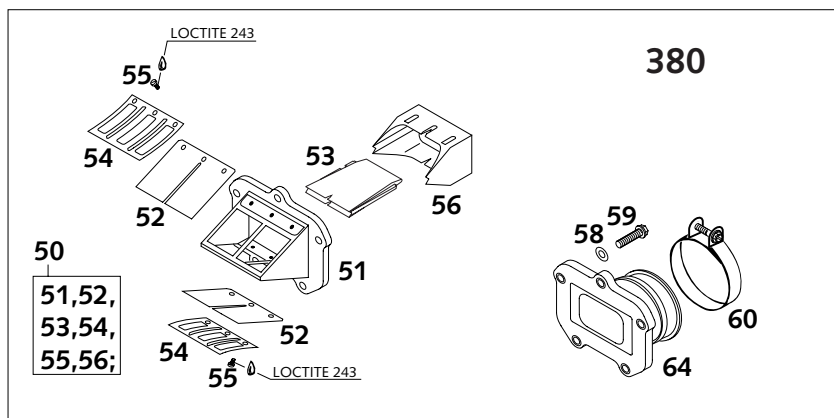
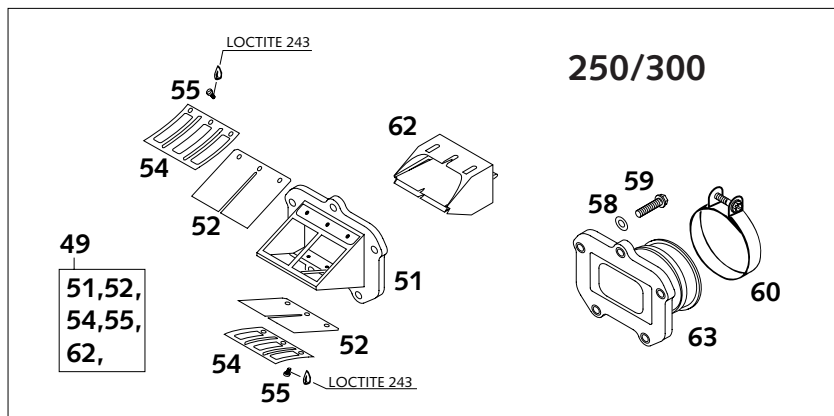


FIG	TEILNR/PARTNR	BEZEICHNUNG	DESCRIPTION	QTY
49	546.30.051.544	MEMBRANGEHÄUSE KPL.250 SX'2000	REED VALVE ASSY CPL.250SX'2000	1
50	546.30.051.444	MEMBRANGEHÄUSE KPL. 125-380'99	REED VALVE ASSY CPL.125-380'99	1
52	547.30.052.040	MEMBRANE CARBON 0,40MM '99	REED VALVE CARBON 0,40MM '99	2
53	503.30.054.050	MEMBRANFLÜGEL 125-380 '99	REED VALVE WING 125-380 '99	1
54	546.30.053.000	ANSCHLAGBLECH	STOP PLATE TOP	2
55	0084 040083	ZYL.SCHRAUBE DIN0084-M 4X 8 A	CYL.HEAD SCREW DIN0084-M 4X 8	6
56	503.30.054.000	MEMBRANEINSATZ 125-380 '99	REED VALVE INSERT 125-380 '99	1
58	0137 060000	FEDERSCHEIBE DIN0137-B 6	SPRING WASHER DIN0137-B 6	5
59	0015 060253	SK.BUNDSCHRAUBE M 6X25 SW=8	HH COLLAR SCREW M 6X25 WS=8	5
60	543.30.061.000	SHELLE 52/12 GEMI	CLAMP 52/12 GEMI	1
62	503.30.054.100	MEMBRANEINSATZ 125-380 2000	REED VALVE INSERT 125-380 2000	1
63	547.30.050.000	ANSAUGFLANSCH 250 SX 2000	INTAKE FLANGE 250 SX 2000	1
64	546.30.050.000	ANSAUGFLANSCH 200-380	INTAKE FLANGE 200-380	1

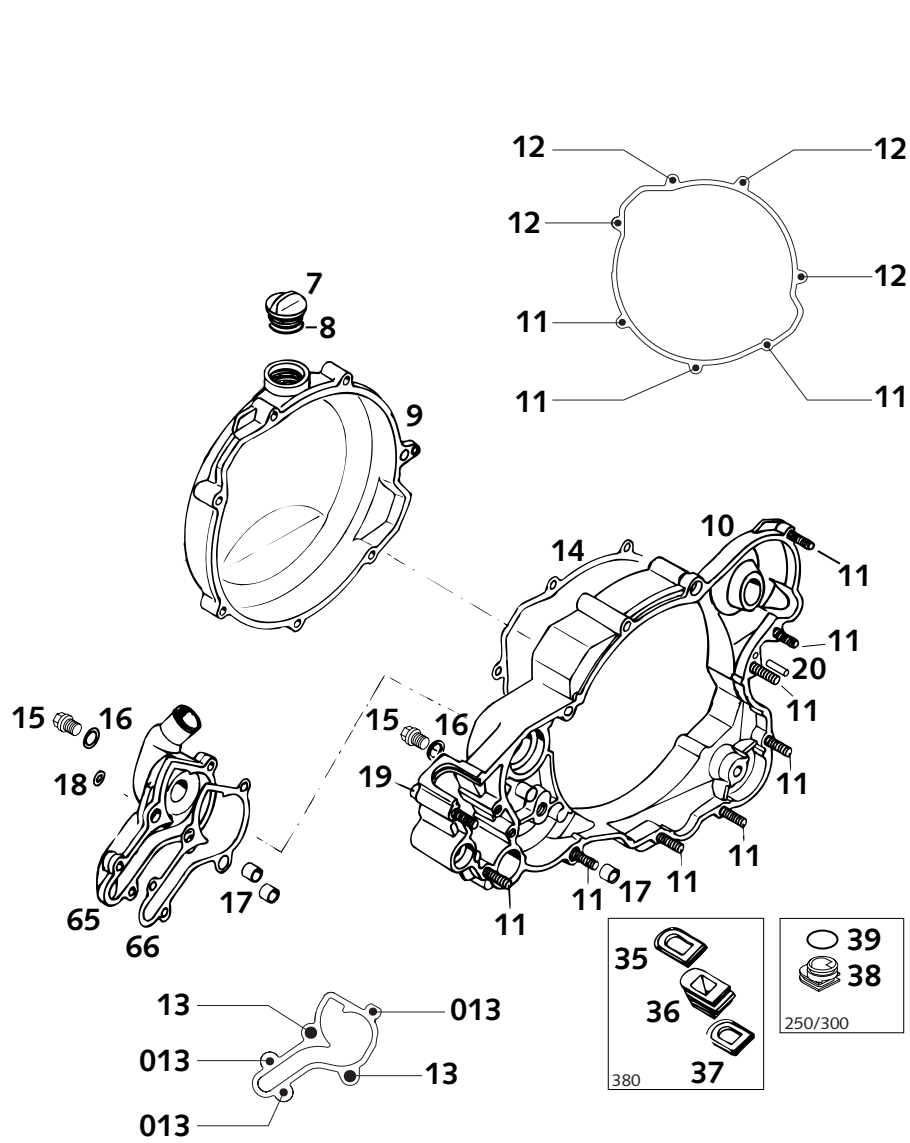


FIG	TEILNR/PARTNR	BEZEICHNUNG	DESCRIPTION	QTY
7	580.30.020.000	ÖLEINFÜLLSCHRAUBE M24 X 3	PLUG M24 X 3	1
8	0770 160030	O-RING 16,00X3,00 NBR 70	O-RING 16,00X3,00 NBR 70	1
9*	546.30.101.000/98	KUPPLUNGSAUSSENDECKEL 2001	OUTER CLUTCH COVER 2001	1
10	546.30.001.300	KUPPLUNGSDECKEL 250/300/380'96	CLUTCH COVER 250/300/360 '96	1
11	0015 060303	SK.BUNDSCHRAUBE M 6X30 SW=8	HH COLLAR SCREW M 6X30 WS=8	11
12	0015 060703	SK.BUNDSCHRAUBE M 6X70 SW=8	HH COLLAR SCREW M 6X70 WS=8	4
13	0015 060253	SK.BUNDSCHRAUBE M 6X25 SW=8	HH COLLAR SCREW M 6X25 WS=8	2
013	0015 060203	SK.BUNDSCHRAUBE M 6X20 SW=8	HH COLLAR SCREW M 6X20 WS=8	3
14	546.30.025.050	KUPPLUNGSAUSSENDECKELDICHUNG	OUTER CLUTCH COVER GASKET	1
15	0910 100003	VERSCHL.SCHR.DIN0910-M10X1	PLUG DIN0910-M10X1	2
16	420.13.226.000	CU-DICHTRING DIN7603-10X16X1	CU-SEAL RING DIN7603-10X16X1	2
17	490.30.090.000	PASSHÜLSE 9,8 X 7 X 10	DOWEL 9,8 X 7 X 10	3
18	0603 061001	CU-DICHTRING DIN7603- 6X10X1	CU-SEAL RING DIN7603- 6X10X1	2
19	0015 060453	SK.BUNDSCHRAUBE M 6X45 SW=8	HH COLLAR SCREW M 6X45 WS=8	1
20	0007 050160	ZYLINDERSTIFT DIN0007- 5X16	CYLINDER PIN DIN0007- 5X16	1
35	546.37.207.000	DICHTELEMENT OBEN	SEALING ELEMENT TOP	1
36	546.37.007.000	ABDICHTUNG	GASKET	1
37	546.37.107.000	DICHTELEMENT UNTEN	SEALING ELEMENT BOTTOM	1
38	547.37.091.000	DICHTELEMENTTRÄGER 250 2000	SEALING CARRIER 250 2000	1
39	0770 021160	O-RING 18,72X2,62	O-RING 18,72X2,62	1
65	546.35.001.000	WASSERPUMPENDECKEL	WATER PUMP COVER	1
66	546.35.003.200	WASSERPUMPENDECKELDICHUNG	WATER PUMP COVER GASKET	1

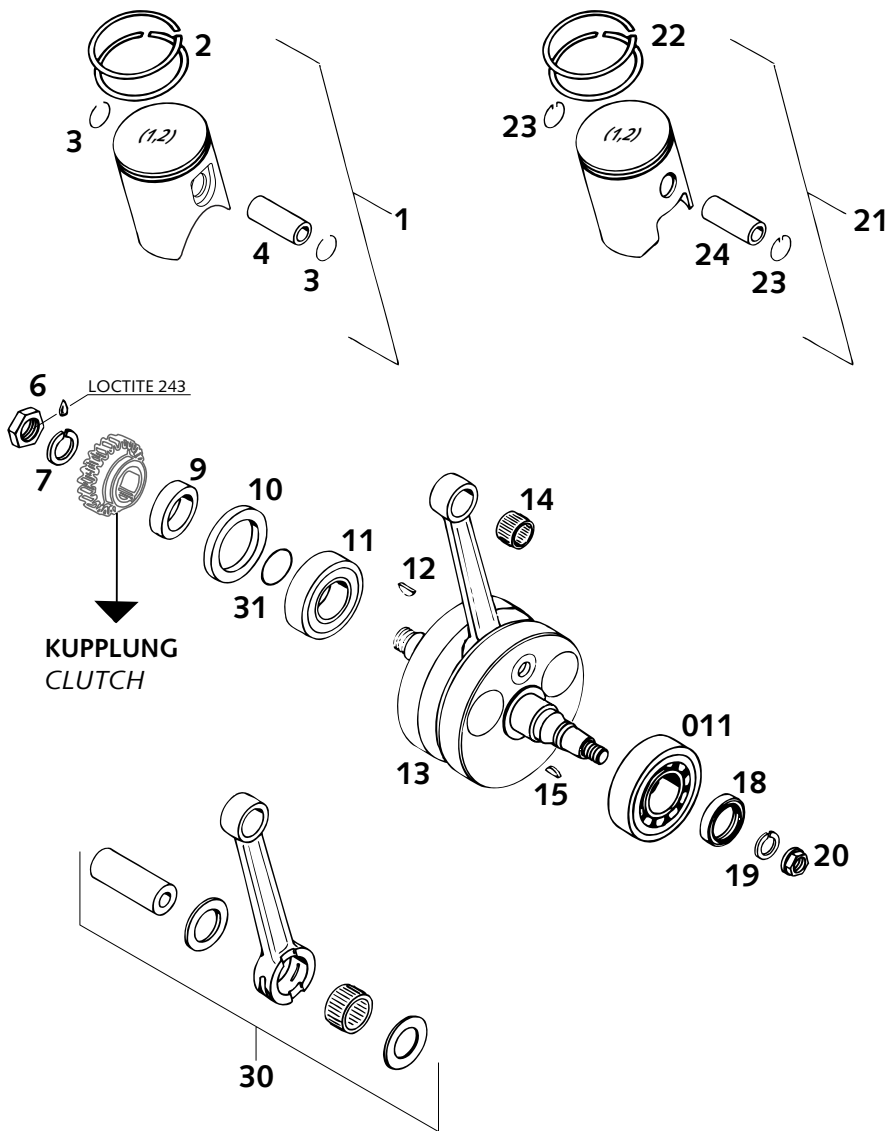


FIG	TEILNR/PARTNR	BEZEICHNUNG	DESCRIPTION	QTY
1	546.30.207.000/ I	KOLBEN I KPL. 66,4MM 250 2000 EINRING	PISTON I CPL. 66,4MM 250 2000 ONE RING	1
1	546.30.207.000/ II	KOLBEN II KPL. 66,4MM 250 2000 EINRING	PISTON II CPL. 66,4MM 250 2000 ONE RING	1
1	546.30.207.100/ I	KOLBEN I KPL. 66,4MM 250 2000 ZWEIRING	PISTON I CPL. 66,4MM 250 2000 TWO RINGS	1
1	546.30.207.100/ II	KOLBEN II KPL. 66,4MM 250 2000 ZWEIRING	PISTON II CPL. 66,4MM 250 2000 TWO RINGS	1
1	547.30.007.300/ I	KOLBEN I KPL. 78,0MM 380'99 ZWEIRING	PISTON I CPL. 78,0MM 380'99 TWO RINGS	1
1	547.30.007.300/ II	KOLBEN II KPL. 78,0MM 380'99 ZWEIRING	PISTON II CPL. 78,0MM 380'99 TWO RINGS	1
2	546.30.232.000	R-RING 66,4MM 250 2000	SQUARE RING 66,4MM 250 2000	1(2)
2	547.30.032.000	R-RING 78,0X1,25 360/380 CC	SQUARE R. 78,0X1,25 360/380 CC	2
3	540.30.074.000	DRAHTSPRENGRING C18X1,5	WIRE LOCK RING C18X1,5	2
4	546.30.233.000	KOLBENBOLZEN 18X55,8 250 2000 250	PISTON PIN 18X55,8 250 2000 250	1
4	547.30.033.000	KOLBENBOLZEN 18 X 48 380	PISTON PIN 18 X 48 380	1
6	546.30.029.000	SK-MUTTER M18X1,5-LINKS	HEX.NUT L/SH M18X1,5	1
7	581.32.072.000	SPERRKANTRING VSK 18	LOCK WASHER VSK 18	1
9	546.30.016.400	DISTANZHÜLSE 28X38X11,5	SPACER SLEEVE 28X38X11,5	1
10	0760 385273	WELLENDICHTRING 38X52X7 BTSL	SHAFT SEAL RING 38X52X7BTSL	1
11	0625 622064	RILLENKUGELLAGER 62206.803107	BALL BEARING 62206.803107	1
011	565.30.123.100	ZYLINDERROLLENLAGER NJ207 NSK	CYLIND.ROLLER BEARING NJ207NSK	1
12	6 946 005	SCHEIBENFEDER 5X6,5 GEHÄRTET	WOODRUFF KEY 5X6,5 HARDED	1
13	546.30.218.000	KURBELWELLE HUB 72 250SX 2000 250 SX	CRANKSHAFT STROKE72 250SX 2000 250 SX	1
13	546.30.218.100	KURBELWELLE HUB 72 „250“ '2000 250 MXC/EXC/EGS	CRANKSHAFT STR.72 „250“ '2000 250 MXC/EXC/EGS	1
13	546.30.318.400	KURBELWELLE HUB 73 „300“ 300	CRANKSHAFT STROKE 73 „300“ 300	1
13	547.30.018.500	KURBELWELLE HUB 77 „380“ 380	CRANKSHAFT STROKE 77 „380“ 380	1
14	544.30.034.000	NADELLAGER KBK 18X22X20	NEEDLE BEARING KBK 18X22X20	1
15	0888 030050	SCHEIBENFEDER DIN6888-3X5X13	WOODRUFF KEY DIN6888-3X5X13	1

* = NEUTEIL / NEW PART X = NACH BEDARF / AS REQUIRED

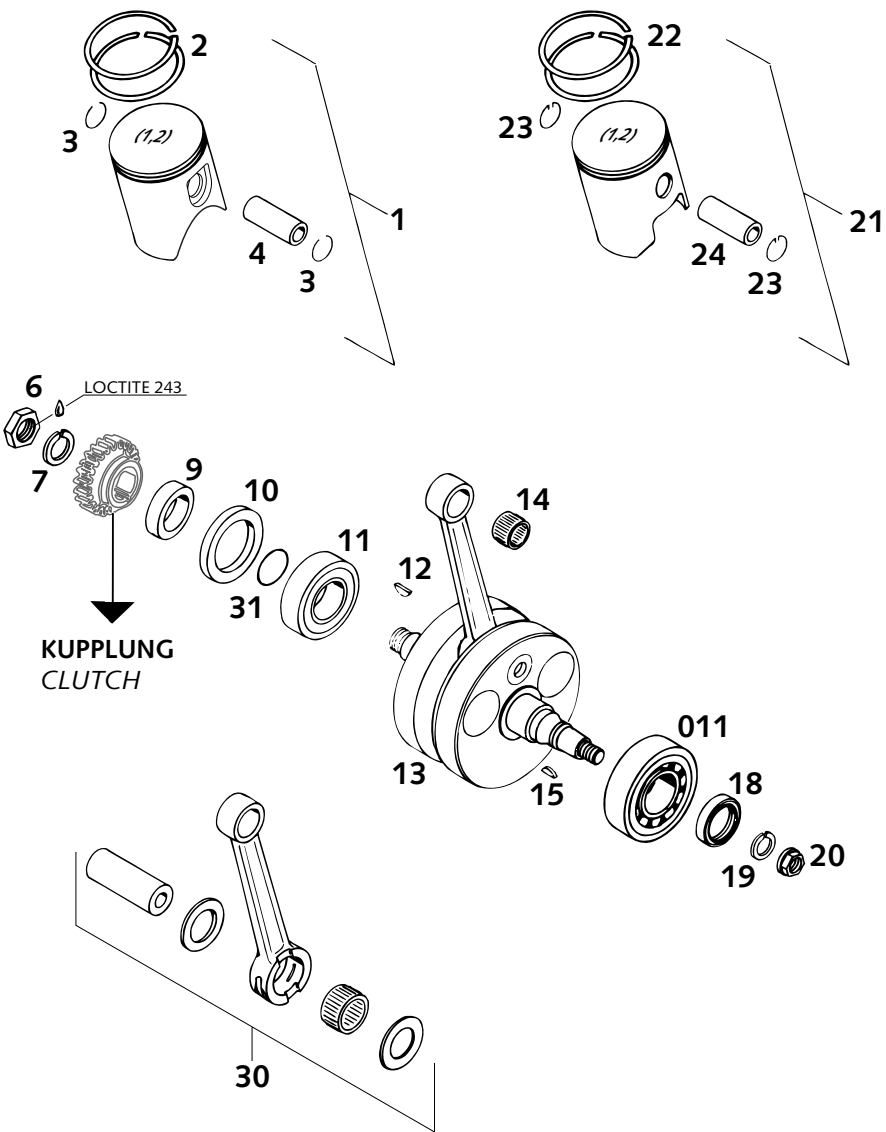


FIG	TEILNR/PARTNR	BEZEICHNUNG	DESCRIPTION	QTY
18	0760 253570	WELLENDICHTRING 25X35X7 BTSL	SHAFT SEAL RING 25X35X7 BTSL	1
19	502.30.029.012	SPERRKANTRING VSK 12	LOCKING RING VSK 12	1
20	490.30.021.000	BUNDMUTTER M12X1 RECHTS	COLLAR NUT M12X1 R/S	1
21	546.30.307.400/ I	KOLBEN I KPL. 72,0MM 300'96 ZWEIRING	PISTON I CPL. 72,0MM 300'96 TWO RINGS	1
21	546.30.307.400/ II	KOLBEN II KPL. 72,0MM 300'96 ZWEIRING	PISTON II CPL. 72,0MM 300'96 TWO RINGS	1
22	546.30.332.000	R-RING 72,0X1,25 300 CC	SQUARE RING 72,0X1,25 300 CC	2
23	543.30.074.000	DRAHTSPRENGRING SKA 18	WIRE LOCK RING SKA 18	2
24	546.30.033.000	KOLBENBOLZEN 18 X 44	PISTON PIN 18 X 44	1
30	546.30.215.000	PLEUEL-REP.SATZ 250 L=129MM'00 250	CONROD REP.KIT 250 L=129MM '00 250	1
30	546.30.015.044	PL.-REP.SATZ 250/300 132MM '96 300	CONR.REP.KIT 250/300 132MM '96 300	1
30	547.30.015.000	PL.-REP.SATZ 360/380 135MM '97 380	CONR.REP.KIT 360/380 135MM '97 380	1
31	0770 250015	O-RING 25,00X1,50 NBR 70	O-RING 25,00X1,50 NBR 70	1

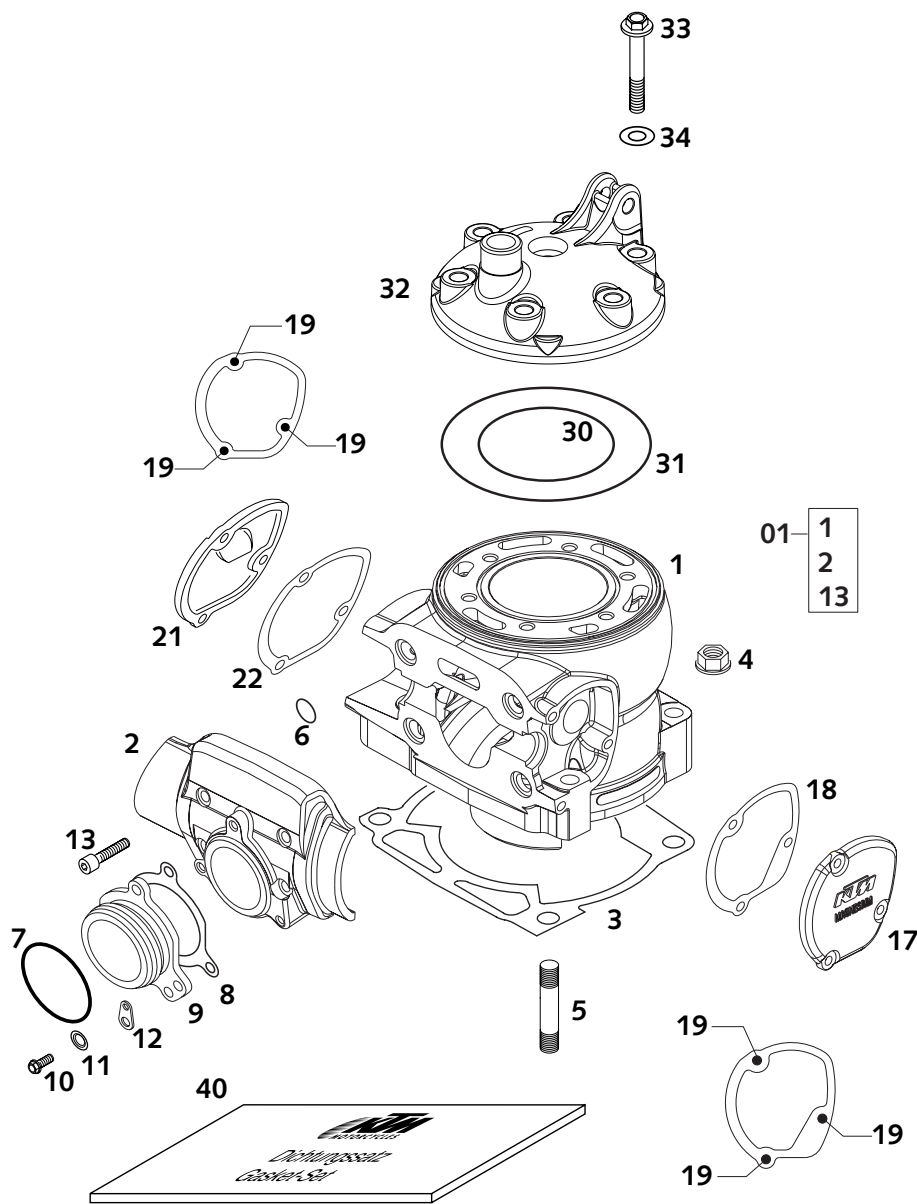


FIG	TEILNR/PARTNR	BEZEICHNUNG	DESCRIPTION	QTY
01*	546.30.205.244	ZYLINDER KPL.M.FLANSCH 250 '01	CYLINDER CPL.W.FLANGE 250 2001	1
01*	546.30.405.244	ZYLINDER KPL.M.FLANSCH 300 '01	CYLINDER CPL.W.FLANGE 300 2001	1
3	546.30.030.102	ZYL.FUSSDICHTUNG 0,20MM '96	CYLINDER BASE GASKET 0,20MM'96	X
3	546.30.030.104	ZYL.FUSSDICHTUNG 0,40MM '98	CYLINDER BASE GASKET 0,40MM'98	X
3	546.30.030.105	ZYL.FUSSDICHTUNG 0,50MM '96	CYLINDER BASE GASKET 0,50MM'96	X
3	546.30.030.107	ZYL.FUSSDICHTUNG 0,75MM '96	CYLINDER BASE GASKET 0,75MM'96	X
4	546.30.044.000	BUNDMUTTER M10 SW=13	COLLAR NUT M10 WS=13	4
5	0835 100456	STIFTSCHRAUBE DIN0835-M10X45 250	STUD DIN0835-M10X45 250	4
5	0835 100403	STIFTSCHRAUBE DIN0835-M10X40 300	STUD DIN0835-M10X40 300	4
6	0770 116241	O-RING 11,3 X2,4 SILICON	O-RING 11,3 X2,4 SILICON	4
7	0770 440030	O-RING 44,00X3,00 VITON NUR FÜR 250	O-RING 44,00X3,00 VITON ONLY FOR 250	1
8	546.30.046.000	AUSPUFFSTUTZENDICHTUNG	EXHAUST FLANGE GASKET	1
9	547.05.003.000	AUSPUFFFLANSCH KPL. 250 '99 250	EXHAUST FLANGE CPL. 250 '99 250	1
9	546.05.073.000	AUSPUFFFLANSCH 300	EXHAUST FLANGE 300	1
10	0015 060163	SK.BUNDSCHRAUBE M 6X16 SW=8	HH COLLAR SCREW M 6X16 WS=8	3
11	0137 060000	FEDERSCHEIBE DIN0137-B 6	SPRING WASHER DIN0137-B 6	3
12	510.05.074.000	FEDERLASCHE	RETAINING PLATE	1
13	0912 060303	ISK.SCHRAUBE DIN0912-M 6X30	AH SCREW DIN0912-M 6X30	4
17*	547.37.005.000/98	STEUERUNGSDECKEL LINKS 2001	CONTROL COVER L/S 2001	1
18	547.37.006.000	DICHTUNG FÜR STEUER.DECKEL LI.	GASKET FOR CONTROL COVER L/S	1
19	0015 050123	SK.BUNDSCHRAUBE M 5X12 SW=8	HH COLLAR SCREW M 5X12 WS=8	6
21*	547.37.007.000/98	STEUERUNGSDECKEL RECHTS 2001	CONTROL COVER R/S 2001	1
22	547.37.008.000	DICHTUNG FÜR STEUER.DECKEL RE.	GASKET FOR CONTROL COVER R/S	1
30	0770 740021	O-RING 74,00X2,00 SILICON	O-RING 74,00X2,00 SILICON	1
30	0770 780021	O-RING 78,00X2,00 SILICON	O-RING 78,00X2,00 SILICON	1
31	0770 114020	O-RING 114,00X2,00 SILICON	O-RING 114,00X2,00 SILICON	1
32	546.30.206.000	ZYLINDERKOPF „2503“ 250 2000 250 MXC,EXC	CYLINDERHEAD „2503“ 250 2000 250 MXC,EXC	1
32*	546.30.206.200	ZYLINDERKOPF „2504“ 250SX 2001	CYL. HEAD „2504“ 250SX 2001	1
32*	546.30.306.700	ZYLINDERKOPF „3002“ 300 2001	CYLINDER HEAD „3002“ 300 2001	1
33	565.30.079.000	BUNDSCHRAUBE M8X42-10.9	SPECIAL SCREW M8X42-10.9	6
34	565.30.080.000	CU-DICHRING 8 X 16 X 1	CU-SEAL RING 8 X 16 X 1	6
40	546.30.097.000	DICHTUNGSSATZ ZYLINDER '96-'01	GASKET SET CYLINDER '96-'01	1

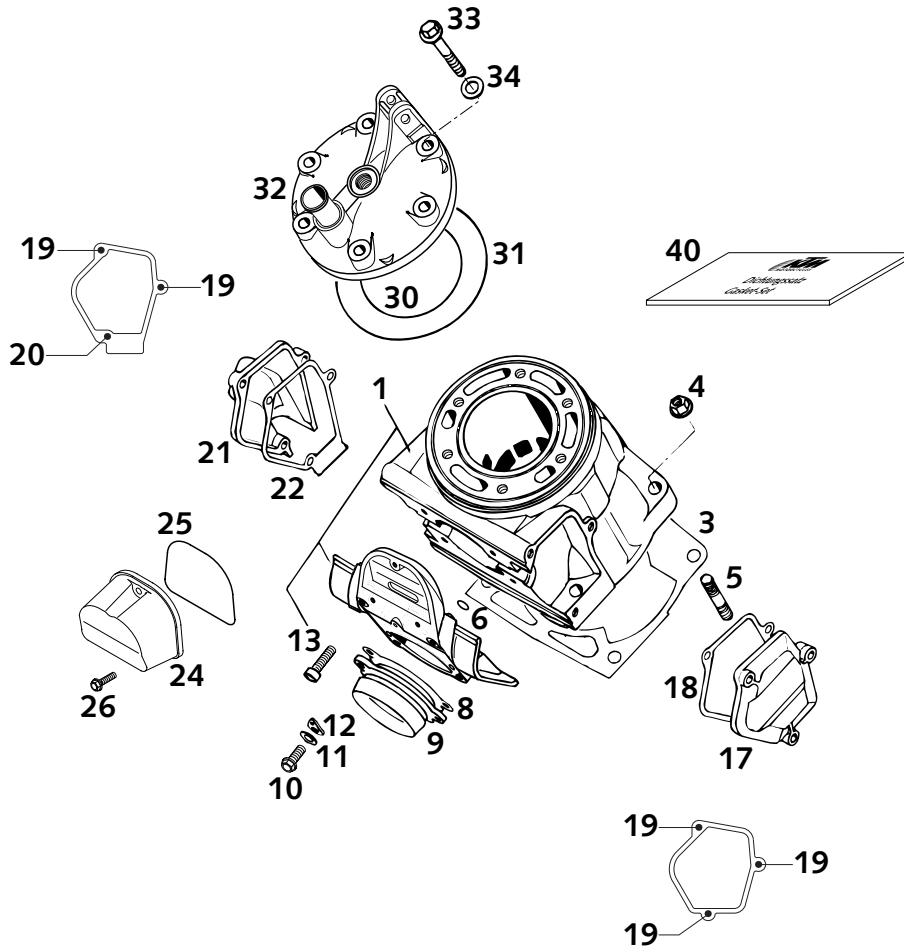


FIG	TEILNR/PARTNR	BEZEICHNUNG	DESCRIPTION	QTY
1	547.30.005.244	ZYLINDER KPL.M.FLANSCH 380'98	CYLINDER CPL.W.FLANGE 380'98	1
3	546.30.030.102	ZYL.FUSSDICHTUNG 0,20MM '96	CYLINDER BASE GASKET 0,20MM'96	X
3	546.30.030.104	ZYL.FUSSDICHTUNG 0,40MM '98	CYLINDER BASE GASKET 0,40MM'98	X
3	546.30.030.105	ZYL.FUSSDICHTUNG 0,50MM '96	CYLINDER BASE GASKET 0,50MM'96	X
3	546.30.030.107	ZYL.FUSSDICHTUNG 0,75MM '96	CYLINDER BASE GASKET 0,75MM'96	X
4	546.30.044.000	BUNDMUTTER M10 SW=13	COLLAR NUT M10 WS=13	4
5	0835 100403	STIFTSCHRAUBE DIN0835-M10X40	STUD DIN0835-M10X40	4
6	0770 116241	O-RING 11,3 X2,4 SILICON	O-RING 11,3 X2,4 SILICON	4
8	546.30.046.000	AUSPUFFSTUTZENDICHTUNG	EXHAUST FLANGE GASKET	1(2)
9	546.05.073.000	AUSPUFFFLANSCH 380	EXHAUST FLANGE 380	1
10	0015 060163	SK.BUNDSCHRAUBE M 6X16 SW=8	HH COLLAR SCREW M 6X16 WS=8	3
11	0137 060000	FEDERSCHEIBE DIN0137-B 6	SPRING WASHER DIN0137-B 6	3
12	510.05.074.000	FEDERLASCHE	RETAINING PLATE	3
13	0912 060303	ISK.SCHRAUBE DIN0912-M 6X30	AH SCREW DIN0912-M 6X30	4
17	546.37.105.000	SEITENDECKEL LINKS	CONTROL COVER L/S	1
18	546.37.106.000	DICHTUNG FÜR SEITENDECKEL	GASKET FOR SIDE COVER	1
19	0912 050123	ISK.SCHRAUBE DIN0912-M 5X12	AH SCREW DIN0912-M 5X12	5
20	0912 050303	ISK.SCHRAUBE DIN0912-M 5X30	AH SCREW DIN0912-M 5X30	1
21	546.37.005.000	STEUERUNGSDECKEL RECHTS	CONTROL COVER R/S	1
22	546.37.006.100	DICHTUNG FÜR STEUERUNGSDECKEL	GASKET FOR CONTROL COVER	1
24	547.37.010.000	ZWISCHENFLANSCHDECKEL KTC '98	FLANGE COVER KTC '98	1
25	0770 690020	O-RING 69,00X2,00 NBR 70	O-RING 69,00X2,00 NBR 70	1
26	0015 050203	SK.BUNDSCHRAUBE M 5X20 SW=8	HH COLLAR SCREW M 5X20 WS=8	3
30	0770 840021	O-RING 84,00X2,00 SILICON	O-RING 84,00X2,00 SILICON	1
31	0770 114020	O-RING 114,00X2,00 SILICON	O-RING 114,00X2,00 SILICON	1
32	547.30.006.100	ZYLINDERKOPF „3602“ 360/380'97	CYLINDER HEAD „3602“360/380'97	1
33	565.30.079.000	BUNDSCHRAUBE M8X42-10.9	SPECIAL SCREW M8X42-10.9	6
34	565.30.080.000	CU-DICHTRING 8 X 16 X 1	CU-SEAL RING 8 X 16 X 1	6
40	546.30.097.000	DICHTUNGSSATZ ZYLINDER '96-'01	GASKET SET CYLINDER '96-'01	1

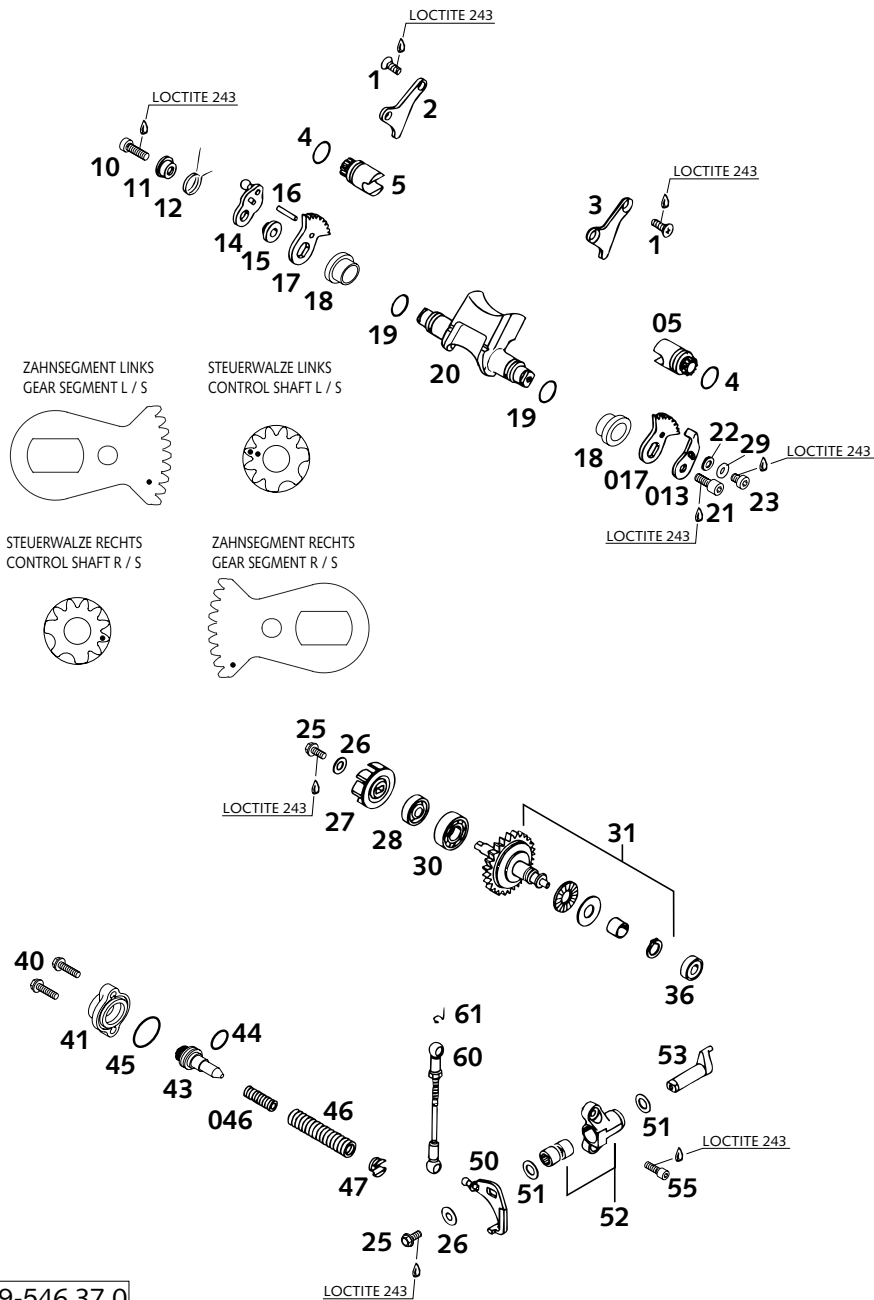


FIG	TEILNR/PARTNR	BEZEICHNUNG	DESCRIPTION	QTY
36	546.37.098.000	RILLENKUGELLAGER 626.2RS1.C3	GROOVED BALL BEAR. 626.2RS1.C3	1
40	0015 050203	SK.BUNDSCHRAUBE M 5X20 SW=8	HH COLLAR SCREW M 5X20 WS=8	2
41	546.37.070.100	VERSCHLUSSDECKEL 250-380'98	COVER LID 250-380'98	1
43	546.37.075.100	FEDERWIDERLAGER 250-380'98	SPRING GUIDE 250-380'98	1
44	0770 021120	O-RING 12,37X2,62 NBR70	O-RING 12,37X2,62 NBR70	1
45	0770 240020	O-RING 24,00X2,00 NBR70	O-RING 24,00X2,00 NBR70	1
46	546.37.072.000	EINSTELLFEDER L=65MM D=1,8MM NUR 250	ADJUST.SPRING L=65MM D=1,8MM ONLY 250	1
46	546.37.072.100	EINSTELLFEDER L=65MM D=2MM '96 NUR 300/380	ADJUST.SPRING L=65MM D=2MM '96 ONLY 300/380	1
046*	546.37.072.500	HILFSFEDER 1,2MM 250	AUXILIARY SPRING 1,2MM 2001 250	1
046	546.37.072.300	HILFSFEDER 1,3MM 300/380	AUXILIARY SPRING 1,3MM '95 300/380	1
47	546.37.071.200	FEDEREINSATZ	SPRING INSERT '91	1
50	546.37.055.244	WINKELHEBEL KPL. '91	ANGLE LEVER CPL. '91	1
51	0988 101610	PASSSCHEIBE DIN988-10X16X1	SHIM WASHER DIN988 10X16X1,0	2
52	546.37.059.244	LAGERBOCK KPL.	BEARING SUPPORT CPL.	1
53	546.37.057.200	VERSTELLHEBEL '91	CONTROL LEVER '91	1
55	0912 050163	ISK.SCHRAUBE DIN0912-M 5X16	AH SCREW DIN0912-M 5X16	2
60	546.37.095.344	GESTÄNGE KPL. 250-380 L=92,5MM 300/380	CONNECT.ROD 250-380 L=92,5MM 300/380	1
60	546.37.095.544	GESTÄNGE KPL. 250 L=96MM '2000 250	CONNECT.ROD CPL.250 L=96MM '00 250	1
61	502.37.195.055	SICHERUNGSBÜGEL DIN-71805-S-8	SECURING DIN-71805-S-8	2

ACHTUNG !!!
 Vor dem Einbau des Vergasers, Bedüsung kontrollieren.
CAUTION !!!
 Before mounting the carburetor, check the jetting.

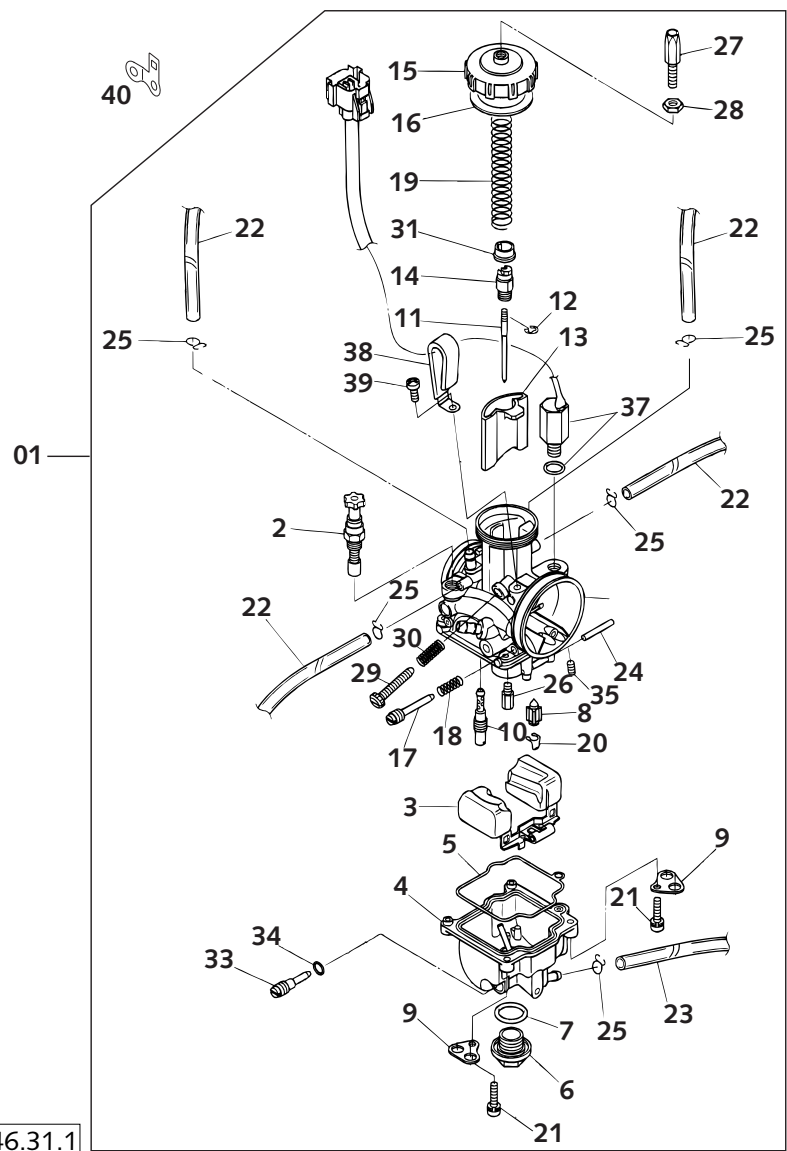


FIG	TEILNR/PARTNR	BEZEICHNUNG	DESCRIPTION	QTY
01	546.31.201.844	VERGASER KEIHIN PWK38 AG PJ'00	CARBURET.KEIHIN PWK38 AG PJ'00	1
2	546.31.245.000	STARTKOLBEN KPL.	STARTER PISTON CPL.	1
3	546.31.209.000	SCHWIMMER R-39 16GRAMM	FLOAT R-39 16GRAMM	1
4	546.31.011.000	SCHWIMMERGEHÄUSE KPL.38PJ '00	FLOAT CHAMBER CPL. 38PJ '2000	1
5	546.31.010.000	DICHTUNG SCHWIMMERGEHÄUSE	GASKET FLOAT CHAMBER	1
6	545.31.699.000	VERSCHLUSSSCHRAUBE M18X1	PLUG M18X1 KEIHIN	1
7	0770 180230	O-RING 18,00X2,30 NBR 70	O-RING 18,00X2,30 NBR 70	1
8	546.31.020.000	SCHWIMMERNADEL PWK 38 AG PJ	FLOAT VALVE CPL. PWK 38 AG PJ	1
9	545.31.612.100	HALTEBLECH F. ENTLÜFTUNGSSCHL.	RETAINING PLATE FOR BLEEDER	2
10	545.31.607.040	LEERLAUFDÜSE GR.40 KEIHIN	IDLE JET 40 KEIHIN	X
10	545.31.607.042	LEERLAUFDÜSE GR.42 KEIHIN	IDLE JET 42 KEIHIN	X
10	545.31.607.045	LEERLAUFDÜSE GR.45 KEIHIN	IDLE JET 45 KEIHIN	X
10	545.31.607.048	LEERLAUFDÜSE GR.48 KEIHIN	IDLE JET 48 KEIHIN	1
10	545.31.607.050	LEERLAUFDÜSE GR.50 KEIHIN	IDLE JET 50 KEIHIN	X
10	545.31.607.052	LEERLAUFDÜSE GR.52 KEIHIN	IDLE JET 52 KEIHIN	X
10	545.31.607.055	LEERLAUFDÜSE GR.55 KEIHIN	IDLE JET 55 KEIHIN	X
10	545.31.607.058	LEERLAUFDÜSE GR.58 KEIHIN	IDLE JET 58 KEIHIN	X
10	545.31.607.060	LEERLAUFDÜSE GR.60 KEIHIN	IDLE JET 60 KEIHIN	X
11	545.31.636.004	DÜSENNADEL NOZ D KEIHIN	JET NEEDLE NOZ D KEIHIN	X
11	545.31.636.005	DÜSENNADEL NOZ E KEIHIN	JET NEEDLE NOZ E KEIHIN	1
11	545.31.636.006	DÜSENNADEL NOZ F KEIHIN	JET NEEDLE NOZ F KEIHIN	X
11	545.31.636.007	DÜSENNADEL NOZ G KEIHIN	JET NEEDLE NOZ G KEIHIN	X
11	545.31.636.008	DÜSENNADEL NOZ H KEIHIN	JET NEEDLE NOZ H KEIHIN	X
11	545.31.636.009	DÜSENNADEL NOZ I KEIHIN	JET NEEDLE NOZ I KEIHIN	X
12	545.31.629.000	KLEMMFEDER	CLIP FOR JET NEEDLE	1
13	546.31.035.000	GASSCHIEBER 7 FÜR 38 PJ '2000	THROTTLE VALVE 7 FOR 38 PJ '00	1
14	546.31.232.000	NIPPEL	NIPPLE	1
15	546.31.227.000	VERGASERDECKEL	CARBURETOR COVER	1
16	545.31.628.000	GUMMIDICHTRING 40X46X1	RUBBER SEAL RING 40X46X1	1
17	545.31.617.000	STELLSCHRAUBE	ADJUSTMENT SCREW	1
18	545.31.615.000	FEDER FÜR STELSCHRAUBE	SPRING FOR ADJUSTMENT SCREW	1
19	546.31.230.000	SCHIEBERFEDER	SLIDING SPRING	1
20	545.31.621.000	KLAMMER	CLAMP	1
21	0016 040163	SK.BUNDSCHRAUBE M 4X16 SW=6	HH COLLAR SCREW M4X16 WS=6	4
22	310.07.007.101	PVC-SCHLAUCH 4 X 6 MM	BREATHER HOSE 4 X 6 MM	2,00
23	520.31.137.001	PVC-SCHLAUCH 3 X 6 MM	PVC-HOSE 3 X 6 MM	0,33

* = NEUTEIL / NEW PART X = NACH BEDARF / AS REQUIRED

ACHTUNG !!!
Vor dem Einbau des Vergasers, Bedüsung kontrollieren.
CAUTION !!!
Before mounting the carburetor, check the jetting.

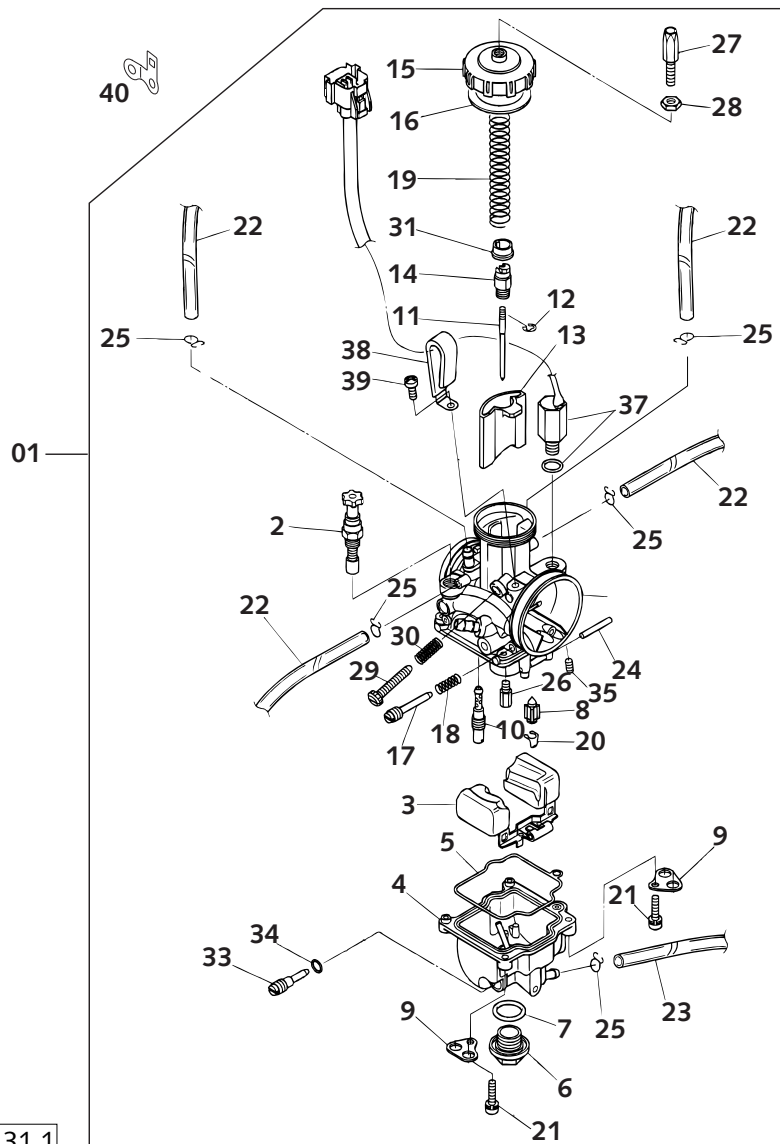
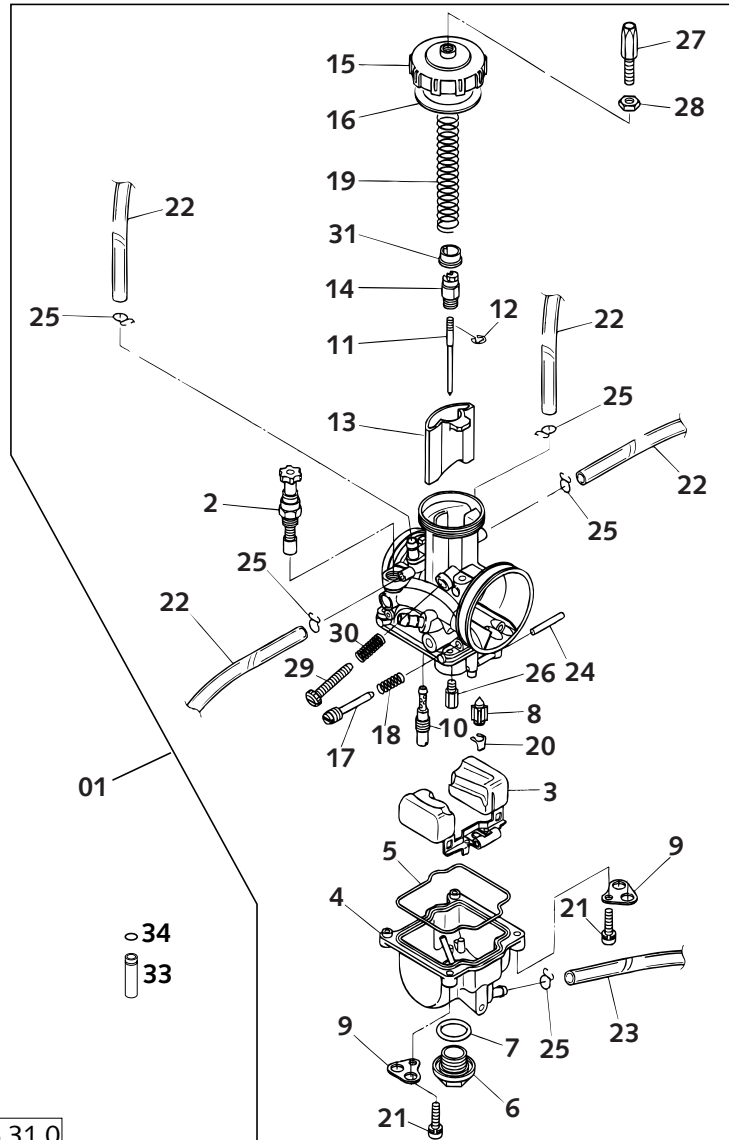


FIG	TEILNR/PARTNR	BEZEICHNUNG	DESCRIPTION	QTY
24	545.31.608.000	STIFT 2,5X25	STUD 2,5X25	1
25	545.31.696.000	KLAMMER 6 MM	CLAMP 6 MM	X
26	545.31.623.160	HAUPTDÜSE GR.160 KEIHIN	MAIN JET 160 KEIHIN	X
26	545.31.623.165	HAUPTDÜSE GR.165 KEIHIN	MAIN JET 165 KEIHIN	X
26	545.31.623.170	HAUPTDÜSE GR.170 KEIHIN	MAIN JET 170 KEIHIN	X
26	545.31.623.172	HAUPTDÜSE GR.172 KEIHIN	MAIN JET 172 KEIHIN	1
26	545.31.623.175	HAUPTDÜSE GR.175 KEIHIN	MAIN JET 175 KEIHIN	X
26	545.31.623.178	HAUPTDÜSE GR.178 KEIHIN	MAIN JET 178 KEIHIN	X
26	545.31.623.180	HAUPTDÜSE GR.180 KEIHIN	MAIN JET 180 KEIHIN	X
27	545.31.625.000	STELLSCHRAUBE M6X0,75	ADJUSTMENT SCREW M6X0,75	1
28	520.31.126.000	SK.MUTTER M6X0,75 DIN0439	HEXAGON NUT M6X0,75 DIN0439	1
29	546.31.219.100	STELLSCHRAUBE M5	ADJUSTMENT SCREW M5	1
30	546.31.118.000	FEDER	SPRING	1
31	546.31.231.000	FEDERTASSE	SPRING CAP	1
33	546.31.014.050	ABLASSSCHRAUBE PWK 38 PJ '2000	DRAIN PLUG PWK 38 PJ '2000	1
34	546.31.014.051	O-RING FÜR ABLASSSCHRAUBE	O-RING FOR DRAIN PLUG	1
35	546.31.085.050	DÜSE POWER JET 50 KEIHIN	JET POWER JET 50 KEIHIN	X
35	546.31.085.055	DÜSE POWER JET 55 KEIHIN	JET POWER JET 55 KEIHIN	1
35	546.31.085.060	DÜSE POWER JET 60 KEIHIN	JET POWER JET 60 KEIHIN	X
37	546.31.086.000	MAGNETVENTIL PWK 38 AG PJ	MAGNETVALVE PWK 38 AG PJ	1
38	546.31.087.000	CLIP FÜR POWER JET KABEL	CLIP FOR POWER JET CABLE	1
39	546.31.087.050	SCHRAUBE FÜR CLIP POWER JET	SCREW FOR CLIP POWER JET	1
40	503.31.079.000	HALTBLECH FÜR PJ-STECKER'2000	BRACKET FOR PJ-PLUG '2000	1

ACHTUNG !!!
Vor dem Einbau des Vergasers, Bedüsung kontrollieren.
CAUTION !!!
Before mounting the carburetor, check the jetting.



00-546.31.0

FIG	TEILNR/PARTNR	BEZEICHNUNG	DESCRIPTION	QTY
01	503.31.001.344	VERGASER KEIHIN PWK 38 AG 2000	CARBURET.KEIHIN PWK 38 AG 2000	1
2	546.31.245.000	STARTKOLBEN KPL.	STARTER PISTON CPL.	1
3	546.31.209.000	SCHWIMMER R-39 16GRAMM	FLOAT R-39 16GRAMM	1
4	546.31.211.000	SCHWIMMERGEHÄUSE	FLOAT CHAMBER	1
5	545.31.610.000	DICHTUNG SCHWIMMERGEHÄUSE	GASKET FLOAT CHAMBER	1
6	545.31.699.000	VERSCHLUSSSCHRAUBE M18X1	PLUG M18X1 KEIHIN	1
7	0770 180230	O-RING 18,00X2,30 NBR 70	O-RING 18,00X2,30 NBR 70	1
8	546.31.220.000	SCHWIMMERNADEL	FLOAT NEEDLE	1
9	545.31.612.100	HALTEBLECH F. ENTLÜFTUNGSSCHL.	RETAINING PLATE FOR BLEEDER	2
10	545.31.607.035	LEERLAUFDÜSE GR.35 KEIHIN	IDLE JET 35 KEIHIN	1
10	545.31.607.038	LEERLAUFDÜSE GR.38 KEIHIN	IDLE JET 38 KEIHIN	X
10	545.31.607.040	LEERLAUFDÜSE GR.40 KEIHIN	IDLE JET 40 KEIHIN	X
10	545.31.607.042	LEERLAUFDÜSE GR.42 KEIHIN	IDLE JET 42 KEIHIN	X
10	545.31.607.045	LEERLAUFDÜSE GR.45 KEIHIN	IDLE JET 45 KEIHIN	1
10	545.31.607.048	LEERLAUFDÜSE GR.48 KEIHIN	IDLE JET 48 KEIHIN	X
10	545.31.607.050	LEERLAUFDÜSE GR.50 KEIHIN	IDLE JET 50 KEIHIN	X
10	545.31.607.052	LEERLAUFDÜSE GR.52 KEIHIN	IDLE JET 52 KEIHIN	X
10	545.31.607.055	LEERLAUFDÜSE GR.55 KEIHIN	IDLE JET 55 KEIHIN	X
10	545.31.607.058	LEERLAUFDÜSE GR.58 KEIHIN	IDLE JET 58 KEIHIN	X
10	545.31.607.060	LEERLAUFDÜSE GR.60 KEIHIN	IDLE JET 60 KEIHIN	X
10	545.31.607.062	LEERLAUFDÜSE GR.62 KEIHIN	IDLE JET 62 KEIHIN	X
10	545.31.607.065	LEERLAUFDÜSE GR.65 KEIHIN	IDLE JET 65 KEIHIN	X
10	545.31.607.070	LEERLAUFDÜSE GR.70 KEIHIN	IDLE JET 70 KEIHIN	X
10	545.31.607.075	LEERLAUFDÜSE GR.75 KEIHIN	IDLE JET 75 KEIHIN	X
10	545.31.607.080	LEERLAUFDÜSE GR.80 KEIHIN	IDLE JET 80 KEIHIN	X
11	545.31.636.004	DÜSENNADEL NOZ D KEIHIN	JET NEEDLE NOZ D KEIHIN	X
11	545.31.636.005	DÜSENNADEL NOZ E KEIHIN	JET NEEDLE NOZ E KEIHIN	X
11	545.31.636.006	DÜSENNADEL NOZ F KEIHIN	JET NEEDLE NOZ F KEIHIN	X
11	545.31.636.007	DÜSENNADEL NOZ G KEIHIN	JET NEEDLE NOZ G KEIHIN	1
11	545.31.636.008	DÜSENNADEL NOZ H KEIHIN	JET NEEDLE NOZ H KEIHIN	1
11	545.31.636.009	DÜSENNADEL NOZ I KEIHIN	JET NEEDLE NOZ I KEIHIN	X
11	545.31.634.175	DÜSENNADEL R 1475 J KEIHIN	JET NEEDLE R 1475 J KEIHIN	1
12	545.31.629.000	KLEMMFEDER	CLIP FOR JET NEEDLE	1
13*	546.31.235.106	GASSCHIEBER 6.5 KEIHIN	THROTTLE VALVE 6.5 KEIHIN	1
14	546.31.232.000	NIPPEL	NIPPLE	1
15	546.31.227.000	VERGASERDECKEL	CARBURETOR COVER	1

* = NEUTEIL / NEW PART

X = NACH BEDARF / AS REQUIRED



ACHTUNG !!!

Vor dem Einbau des Vergasers, Bedüsung kontrollieren.

CAUTION !!!

Before mounting the carburetor, check the jetting.

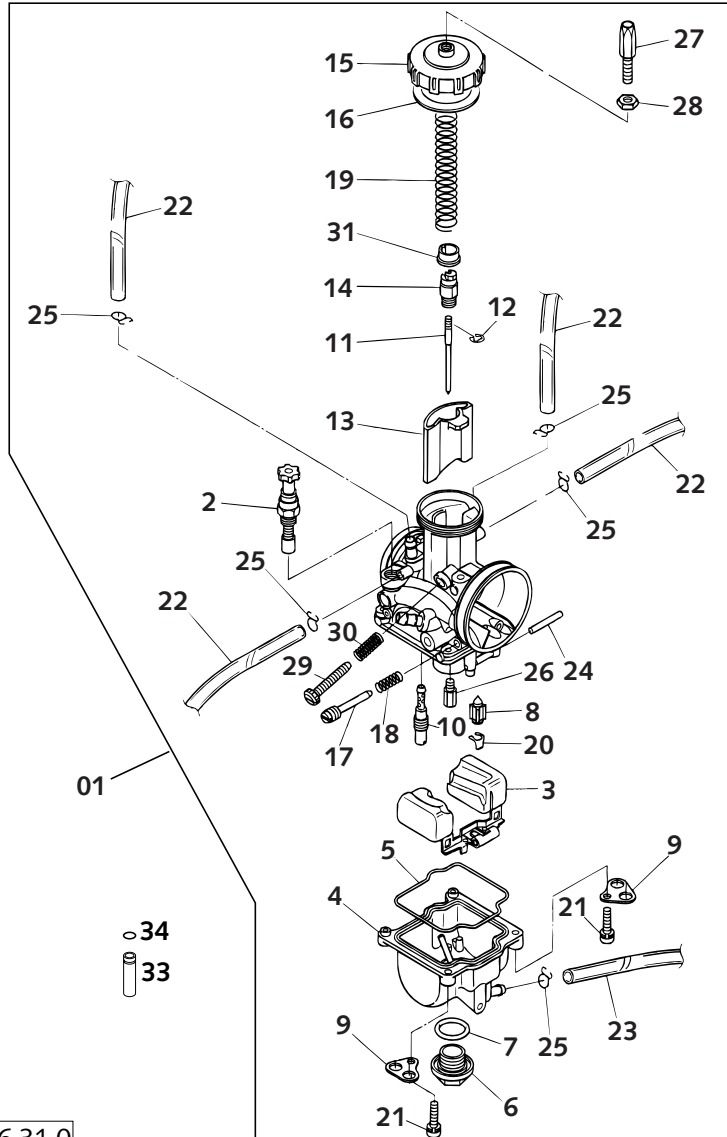


FIG	TEILNR/PARTNR	BEZEICHNUNG	DESCRIPTION	QTY
16	545.31.628.000	GUMMIDICHTRING 40X46X1	RUBBER SEAL RING 40X46X1	1
17	545.31.617.000	STELLSCHRAUBE	ADJUSTMENT SCREW	1
18	545.31.615.000	FEDER FÜR STELSCHRAUBE	SPRING FOR ADJUSTMENT SCREW	1
19	546.31.230.000	SCHIEBERFEDER	SLIDING SPRING	1
20	545.31.621.000	KLAMMER	CLAMP	1
21	0016 040163	SK.BUNDSCHRAUBE M 4X16 SW=6	HH COLLAR SCREW M4X16 WS=6	4
22	310.07.007.101	PVC-SCHLAUCH 4 X 6 MM	BREATHER HOSE 4 X 6 MM	2,00
23	520.31.137.001	PVC-SCHLAUCH 3 X 6 MM	PVC-HOSE 3 X 6 MM	0,33
24	545.31.608.000	STIFT 2,5X25	STUD 2,5X25	1
25	545.31.696.000	KLAMMER 6 MM	CLAMP 6 MM	X
26	545.31.623.150	HAUPTDÜSE GR.150 KEIHIN	MAIN JET 150 KEIHIN	X
26	545.31.623.158	HAUPTDÜSE GR.158 KEIHIN	MAIN JET 158 KEIHIN	X
26	545.31.623.160	HAUPTDÜSE GR.160 KEIHIN	MAIN JET 160 KEIHIN	X
26	545.31.623.165	HAUPTDÜSE GR.165 KEIHIN	MAIN JET 165 KEIHIN	X
26	545.31.623.168	HAUPTDÜSE GR.168 KEIHIN	MAIN JET GR.168 KEIHIN	X
26	545.31.623.170	HAUPTDÜSE GR.170 KEIHIN	MAIN JET 170 KEIHIN	1
26	545.31.623.172	HAUPTDÜSE GR.172 KEIHIN	MAIN JET 172 KEIHIN	X
26	545.31.623.175	HAUPTDÜSE GR.175 KEIHIN	MAIN JET 175 KEIHIN	1
26	545.31.623.178	HAUPTDÜSE GR.178 KEIHIN	MAIN JET 178 KEIHIN	1
26	545.31.623.180	HAUPTDÜSE GR.180 KEIHIN	MAIN JET 180 KEIHIN	X
26	545.31.623.182	HAUPTDÜSE GR.182 KEIHIN	MAIN JET 182 KEIHIN	X
26	545.31.623.185	HAUPTDÜSE GR.185 KEIHIN	MAIN JET 185 KEIHIN	X
26	545.31.623.188	HAUPTDÜSE GR.188 KEIHIN	MAIN JET 180 KEIHIN	X
26	545.31.623.190	HAUPTDÜSE GR.190 KEIHIN	MAIN JET 190 KEIHIN	X
26	545.31.623.192	HAUPTDÜSE GR.192 KEIHIN	MAIN JET 192 KEIHIN	X
26	545.31.623.195	HAUPTDÜSE GR.195 KEIHIN	MAIN JET 195 KEIHIN	X
27	545.31.625.000	STELLSCHRAUBE M6X0,75	ADJUSTMENT SCREW M6X0,75	1
28	520.31.126.000	SK.MUTTER M6X0,75 DIN0439	HEXAGON NUT M6X0,75 DIN0439	1
29	546.31.219.100	STELLSCHRAUBE M5	ADJUSTMENT SCREW M5	1
30	546.31.118.000	FEDER	SPRING	1
31	546.31.231.000	FEDERTASSE	SPRING CAP	1
33	503.31.029.034	SCHIEBERANSCHLAG L=34MM	SLIDE STOP L=34MM	X
34	0770 060018	O-RING 6,00X1,78	O-RING 6,00X1,78	X

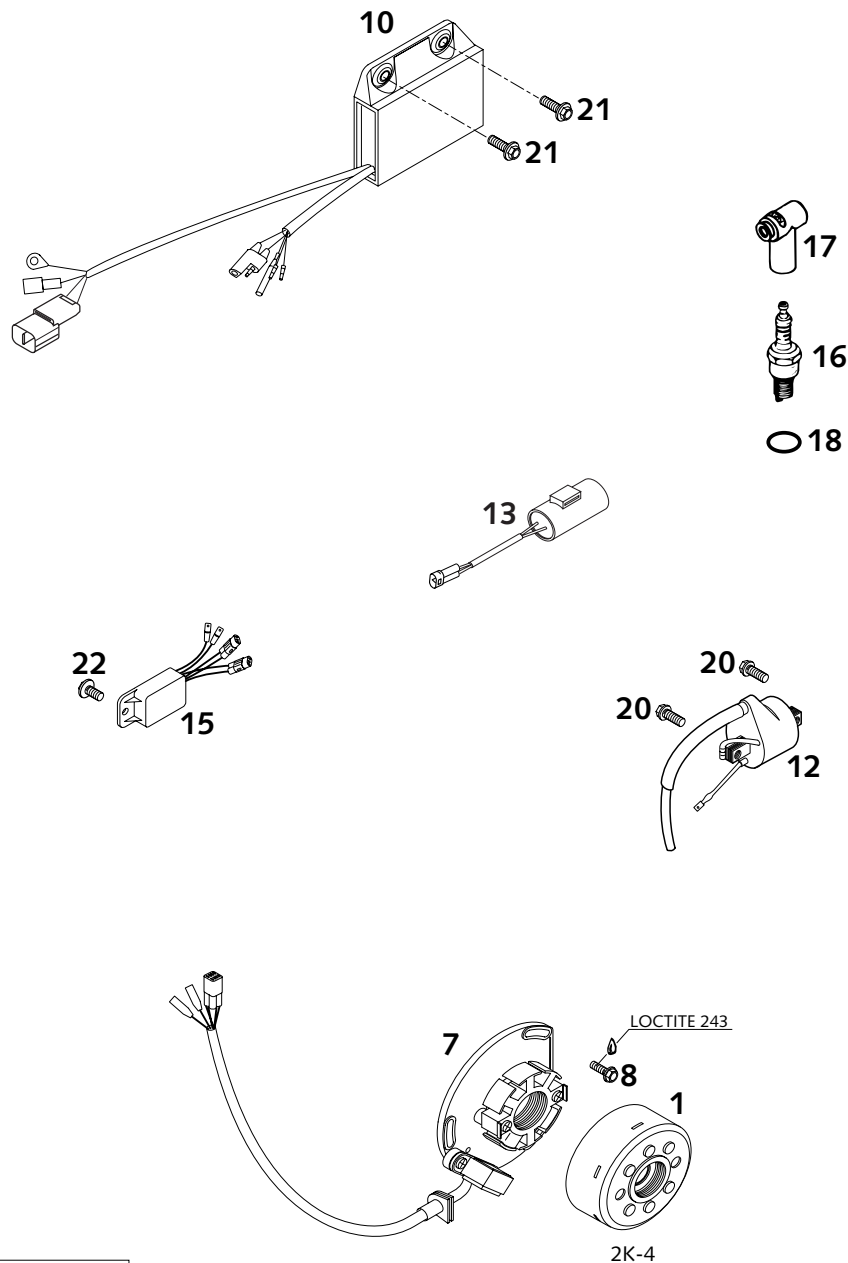


FIG	TEILNR/PARTNR	BEZEICHNUNG	DESCRIPTION	QTY
1	547.39.005.000	ROTOR KOKUSAN 2K-1/2K-4 '97	FLYWHEEL KOKUSAN 2K-1/2K-4 '97	1
7	503.39.004.400	STATOR KOKUSAN 2K-4 '2000	STATOR KOKUSAN 2K-4 '2000	1
8	0015 050163	SK.BUNDSCHRAUBE M 5X16 SW=8	HH COLLAR SCREW M 5X16 WS=8	3
10*	546.39.031.600	ELEKTRONIKBOX KOK. 250 SX 2001	CDI UNIT KOKUSAN 250 SX 2001	1
12	503.39.006.000	ZÜNDSP.KOK.IG 3834 125-380 '98	IGNITION COIL KOKU. 125-380'98	1
13	503.11.035.000	KONDENSATOR 2200MF ADP-48 2000	CONDENSATOR 2200MF ADP-48 2000	1
15	503.11.034.100	SPANNUNGSREGLER 12V 2K4 '00	VOLTAGE REGULATOR 12V 2K4 '00	1
16	543.31.093.410	ZÜNDKERZE NGK BR8ECM	SPARK PLUG NGK BR8ECM	1
17	545.31.010.000	KERZENSTECKER LB05EMH NGK	SPARK PLUG CAP LB05EMH NGK	1
18	0770 150040	O-RING 15,00X4,00 NBR 70	O-RING 15,00X4,00 NBR 70	1
20	0015 060163	SK.BUNDSCHRAUBE M 6X16 SW=8	HH COLLAR SCREW M 6X16 WS=8	2
21	0014 060203	SK.BUNDSCHRAUBE M 6X20 SW=8	HH COLLAR SCREW M 6X20 WS=8	2
22	0015 060123	SK.BUNDSCHRAUBE M 6X12 SW=8	HH COLLAR SCREW M 6X12 WS=8	1

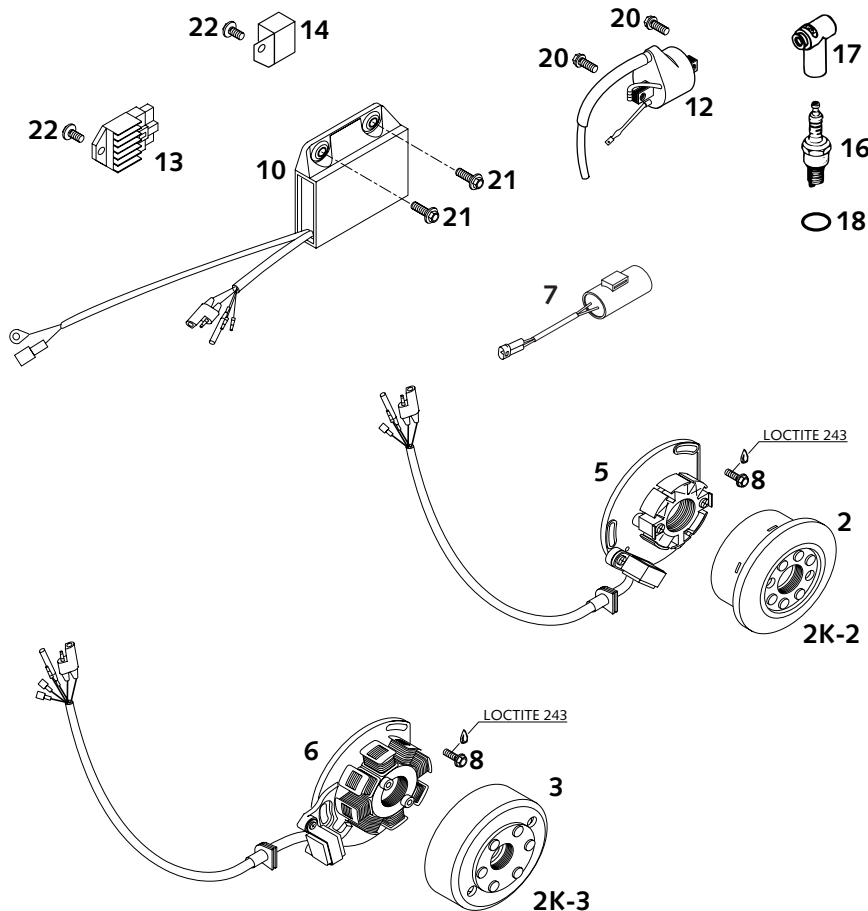


FIG	TEILNR/PARTNR	BEZEICHNUNG	DESCRIPTION	QTY
2	547.39.005.144	ROTOR KOKUSAN 2K-2 KPL. '97	FLYWHEEL KOKUSAN 2K-2 CPL. '97	1
3	503.39.005.200	ROTOR KOKUSAN 2K-3 '98	FLYWHEEL KOKUSAN 2K-3 '98	1
5	503.39.004.100	STATOR KOKUSAN 2K-2 '98 250 MXC,EXC USA, 300 MXC USA	STATOR KOKUSAN 2K-2 '98 250 MXC,EXC USA, 300 MXC USA	1
6	503.39.004.200	STATOR KOKUSAN 2K-3 '98 250/300 EXC,380 SX,MXC,EXC	STATOR KOKUSAN 2K-3 '98 250/300 EXC,380 SX,MXC,EXC	1
7	503.11.035.000	KONDENSATOR 2200MF ADP-48 2000 250/300/380 EXC EU,AUS	CONDENSATOR 2200MF ADP-48 2000 250/300/380 EXC EU,AUS	1
8	0015 050163	SK.BUNDSCHRAUBE M 5X16 SW=8	HH COLLAR SCREW M 5X16 WS=8	3
10*	546.39.031.500	ELEKTRONIKBOX 250 EXC 2001 250 MXC,EXC	CDI UNIT 250 EXC 2001 250 MXC,EXC	1
10	547.39.031.200	ELEKTRO.BOX CU7423 300/380 '98 300/380 SX,MXC,EXC	CDI UNIT CU7423 300/380'98 300/380 SX,MXC,EXC	1
12	503.39.006.000	ZÜNDSP.KOK.IG 3834 125-380 '98	IGNITION COIL KOKU. 125-380'98	1
13	503.11.034.000	SPANNUNGSREGLER 12V 125-380'98 250/300/380 EXC	VOLTAGE REGULA. 12V 125-200'98 250/300/380 EXC	1
14	547.11.034.000	SPANNUNGSREGLER KOKU. EXC USA 250 MXC,EXC USA	VOLTAGE REGULATOR KOKUSAN EXC 250 MXC,EXC USA	1
16	543.31.093.410	ZÜNDKERZE NGK BR8ECM	SPARK PLUG NGK BR8ECM	1
17	545.31.010.000	KERZENSTECKER LB05EMH NGK	SPARK PLUG CAP LB05EMH NGK	1
18	0770 150040	O-RING 15,00X4,00 NBR 70	O-RING 15,00X4,00 NBR 70	1
20	0015 060163	SK.BUNDSCHRAUBE M 6X16 SW=8	HH COLLAR SCREW M 6X16 WS=8	2
21	0014 060203	SK.BUNDSCHRAUBE M 6X20 SW=8	HH COLLAR SCREW M 6X20 WS=8	2
22	0015 060123	SK.BUNDSCHRAUBE M 6X12 SW=8	HH COLLAR SCREW M 6X12 WS=8	1

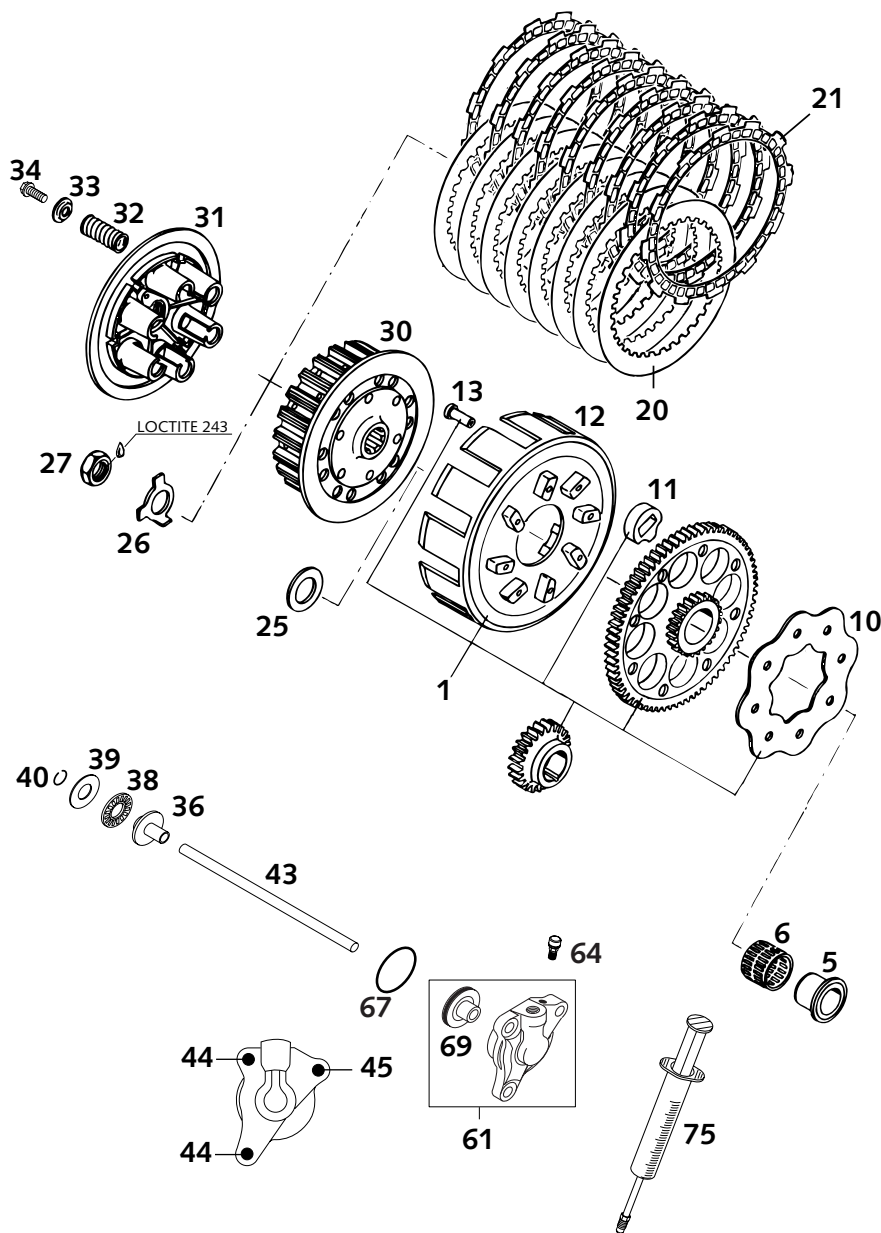


FIG	TEILNR/PARTNR	BEZEICHNUNG	DESCRIPTION	QTY
1	546.32.001.272	KUPPLUNGSKORB 72-Z M.PRIM.25-Z 250/300 CC	OUTER CLUTCH HUB 72T PRIM. 25T 250/300 CC	1
1	546.32.001.372	KUPPLUNGSKORB 72-Z M.PRIM.26-Z 380 CC	OUTER CLUTCH HUB 72T PRIM. 26T 380 CC	1
5	503.32.070.000	INNENRING MIT BUND	INNER RING WITH COLLAR	1
6	565.32.095.000	NADELKRAENZ K 26X30X22 ZW.KSE	NEEDLE BEARING K26X30X22ZW.KSE	1
10	581.32.028.000	HALTEBLECH	RETAINING PLATE	1
11	581.32.026.000	DÄMPFERELEMENT	DAMPING ELEMENT	8
12	546.32.001.200	KUPPLUNGSKORB LOSE	OUTER CLUTCH HUB LOOSE	1
13	0733 060150	KUPPLUNGSNIET DIN7338- 6X15	CLUTCH RIVET DIN7338- 6X15	8
20	546.32.012.000	STAHLLAMELLE 1,2 MM	STEEL DISK 1,2 MM	8
21	546.32.011.300	BELAGLAMMELLE 2,7 MM '96	LINING DISK 2,7 MM '96	9
25	575.32.013.000	STÜTZSCHEIBE 22,2X35X3 GEHÄRT.	SUPPORT WASHER 22,2X35X3 HARDE.	1
26	565.32.018.000	SICHERUNGSBLECH	LOCK WASHER	1
27	0936 181505	SK.MUTTER DIN0936-M18X1,5 RE.	HEXAGON NUT DIN0936-M18X1,5 R.	1
30	546.32.002.200	MITNEHMER	INNER CLUTCH HUB	1
31	546.32.003.000	DRUCKKAPPE 250-380 '98	PRESSURE CAP 250-380 '98	1
32	546.32.080.000	KUPPLUNGSFEDER 2,5X43 8,5W	CLUTCH SPRING 2,5X43 8,5W	6
33	581.32.081.000	FEDERTELLER 6,2 X 20 X 3,2	SPRING RETAINER 6,2 X 20 X 3,2	6
34	0015 060163	SK.BUNDSCHRAUBE M 6X16 SW=8	HH COLLAR SCREW M 6X16 WS=8	6
36	503.32.054.051	DRUCKPILZ 125-380 '98	PRESSURE PIECE 125-380 '98	1
38	546.37.097.200	AXIALLAGER AXK 1226	AXIAL NEEDLE BEARING 1226 AXK	1
39	546.37.098.200	AXIALSCHEIBE AS1226 12X26X1	AXIAL WASHER AS1226 12X26X1	1
39	546.37.098.300	AXIALSCHEIBE 12,5X25,8X1,5	AXIAL WASHER 12,5X25,8X1,5	X
40	0993 012000	SPRENGRING DIN7993-RW12	CIRCLIP DIN7993A-RW12	1
43	547.32.054.000	DRUCKSTANGE 199,6MM 250-380'99	PUSH ROD L=199,8MM 250-380 '99	1
44	0015 060163	SK.BUNDSCHRAUBE M 6X16 SW=8	HH COLLAR SCREW M 6X16 WS=8	2
45	0015 060203	SK.BUNDSCHRAUBE M 6X20 SW=8	HH COLLAR SCREW M 6X20 WS=8	1
61	547.32.061.044	NEHMERZYLINDER KPL. 250-380'99	CYLINDER CPL. 250-380 '99	1
64	547.32.064.000	ENTLÜFTUNGSCHR. MIT KAPPE	BLEEDER SCREW WITH CAP	1
67	0770 300015	O-RING 30,00X1,50 NBR 70	O-RING 30,00X1,50 NBR 70	1
69	546.32.066.000	KOLBEN MIT O-RING 250-380'2000	PISTON W. O-RING 250-380 '2000	1
75	503.29.050.000	ENTLÜFT.SPRITZE HYDR. KUPPLUNG	VENT INJEKTION HYDR. CLUTCH	1

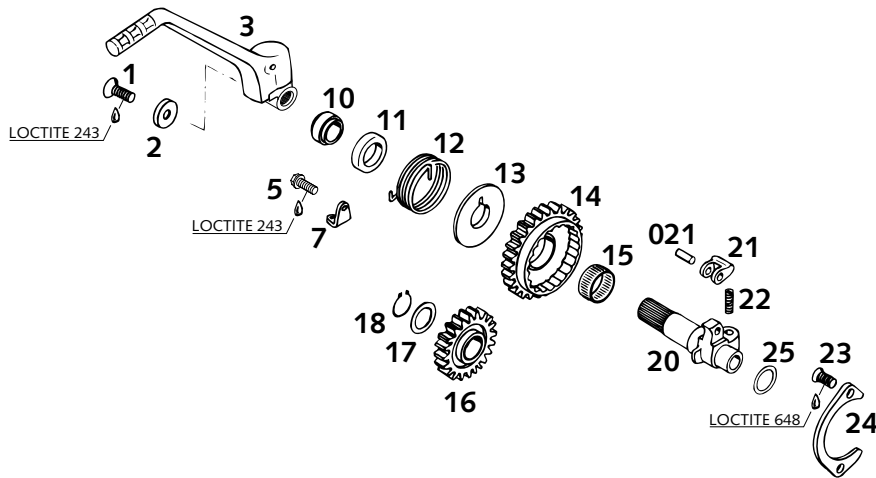


FIG	TEILNR/PARTNR	BEZEICHNUNG	DESCRIPTION	QTY
1	546.10.052.000	KETTENRADSCHRAUBE-ISK M 8X20	SPROCKET SCREW-AH M 8X20	1
2	546.33.037.000	FASSONSCHIEBE 8 MM VERZINKT	WASHER D=8MM	1
3	546.33.036.344	KICKSTARTER KPL. 250/VI '92	KICKSTARTER CPL. 250/VI '92	1
5	0015 060163	SK.BUNDSCHRAUBE M 6X16 SW=8	HH COLLAR SCREW M 6X16 WS=8	1
7	546.33.074.000	FEDERLASCHE	SPRING HANGER	1
10	546.33.038.000	DISTANZBÜCHSE	SPACER BUSHING ZINC PLATED	1
11	0760 193070	WELLENDICHTRING 19X30X7 B	SHAFT SEAL RING 19X30X7B	1
12	546.33.025.000	KICKSTARTERFEDER	KICKSTARTER SPRING	1
13	546.33.026.000	MITNEHMERNABE	DRIVING HUB	1
14	547.33.051.034	STARTERRAD 34-Z 250-380 '99	KICKSTART.GEAR 34-Z 250-380'99	1
15	565.33.098.000	NADELKRANZ K 22 X 26 X 13 H	NEEDLE BEARING K 22 X 26 X 13H	1
16	546.33.024.200	STARTERZWISCHENRAD 24 Z	KICKST.INTERMEDIATE GEAR 24 T	1
17	546.33.090.000	ANLAUFSCHIEBE 17,2X25X1	STOP DISK 17,2X24X1	1
18	0471 170010	SICHERUNGSRING DIN0471-17X1	CIRCLIP DIN0471-17X1	1
20	546.33.021.200	KICKSTARTERWELLE	KICKSTARTER SHAFT	1
021	0402 061480	NADELROLLE DIN5402 NRB 6X14,8	NEEDLE ROLLER DIN5402 6X14,8	1
21	546.33.023.200	SPERRKLINKE	LOCKING PAWL	1
22	546.33.028.200	KLINKENFEDER	RATCHET SPRING	1
23	0991 060166	SENKSCHR. DIN7991-M 6X16	FLAT HEAD SCR. DIN7991-M 6X16	2
24	547.33.069.000	AUSRÜCKBLECH 6MM '99	RELEASE PLATE 6MM '99	1
25	0988 172405	PASSSCHEIBE DIN0988-17X24X0,5	SHIM WASHER DIN0988-17X24X0,5	1

ACHTUNG !
Bei Bestellung von Getrieberädern, Markierung beachten.

CAUTION !
When you order transmission gears, check marking.

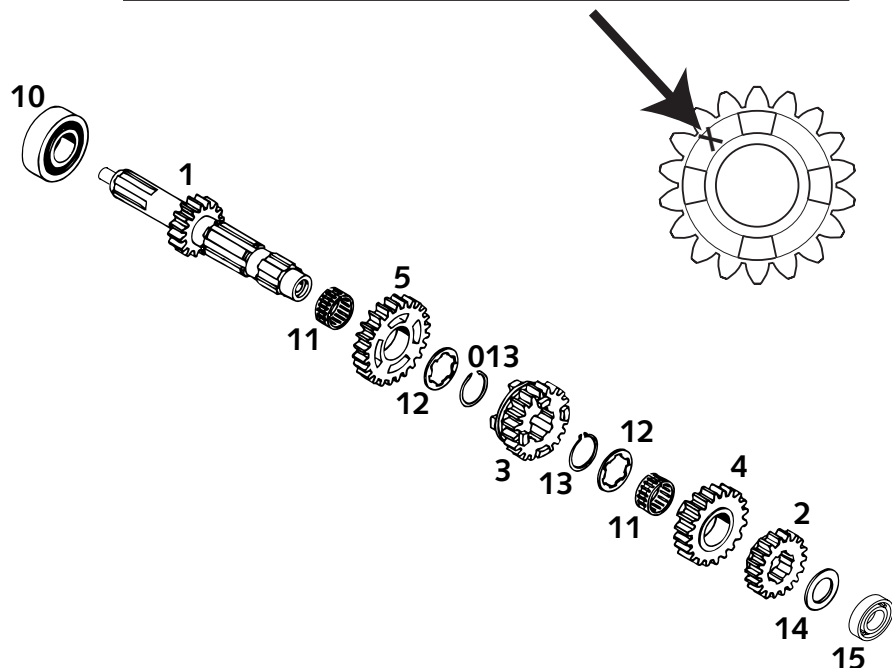


FIG	TEILNR/PARTNR	BEZEICHNUNG	DESCRIPTION	QTY
1	547.33.001.000	ANTRIEBSWELLE 15-Z '99	MAIN SHAFT 15-T '99	1
2	546.33.010.000	FESTRAD 2.G 17-Z SX 250 „441“ 250 SX/MXC	2ND GEAR MAINSHAFT 17-T „441“ 250 SX/MXC	1
2	546.33.110.000	FESTRAD 2.G 18-Z SX/GS „446“ 250-380 EXC,380SX,300/380 MXC	2ND GEAR MAINSHAFT 18-T „446“ 250-380 EXC,380SX,300/380 MXC	1
3	546.33.006.300	SCHIEBERAD 3.G 19-Z SX „462“ 250/380 SX, 250/300/380 MXC	3RD GEAR MAINSHAFT 19-T „462“ 250/380 SX, 250/300/380 MXC	1
3	546.33.106.300	SCHIEBERAD 3.G 19-Z GS „467“ 250-380 EXC	3RD GEAR MAINSHAFT 19-T „467“ 250-380 EXC	1
4	546.33.008.000	LOSRAD 4.G 21-Z SX „480“ 250/380 SX, 250/300/380 MXC	4TH GEAR MAINSHAFT 21-T „480“ 250/380 SX, 250/300/380 MXC	1
4	546.33.108.000	LOSRAD 4.G 21-Z GS „485“ 250-380 EXC	4TH GEAR MAINSHAFT 21-T „485“ 250-380 EXC	1
5	546.33.004.000	LOSRAD 5.G 23-Z SX „500“ 250/380 SX, 250/300/380 MXC	5TH GEAR MAINSHAFT 23-T „500“ 250/380 SX, 250/300/380 MXC	1
5	546.33.104.000	LOSRAD 5.G 23-Z GS „505“ 250-380 EXC	5TH GEAR MAINSHAFT 23-T „505“ 250-380 EXC	1
10	0625 201029	RILL.KUGELLAGER 6304-22 C4	BALL BEARING 6304-22 C4 SKF	1
11	565.33.099.000	NADELKRANZ K22X26X13 GETEILT	NEEDLE BEAR. K22X26X13 DIVIDED	2
12	546.33.016.000	ANLAUFSCHIEBE 22,4X25,7X32X1,5	STOP DISK 22,5X25,7X32X1,5	2
13	520.33.096.000	SICH.RING DIN0471-25X1,64SD	LOCK RING DIN0471-25X1,64SD	1
013	546.33.096.000	AXIALSICHERUNG 25X1,64	AXIAL-CIRCLIP 25X1,64	1
14	546.33.015.000	ANLAUFSCHIEBE 20,2X33X1,5	STOP DISK 20,2X33X1,5	1
15	0625 069040	RILLENKUGELLAGER NSK 6904 C3	BALL BEARING 61904 C3	1

ACHTUNG !
Bei Bestellung von Getrieberädern, Markierung beachten.

CAUTION !
When you order transmission gears, check marking.

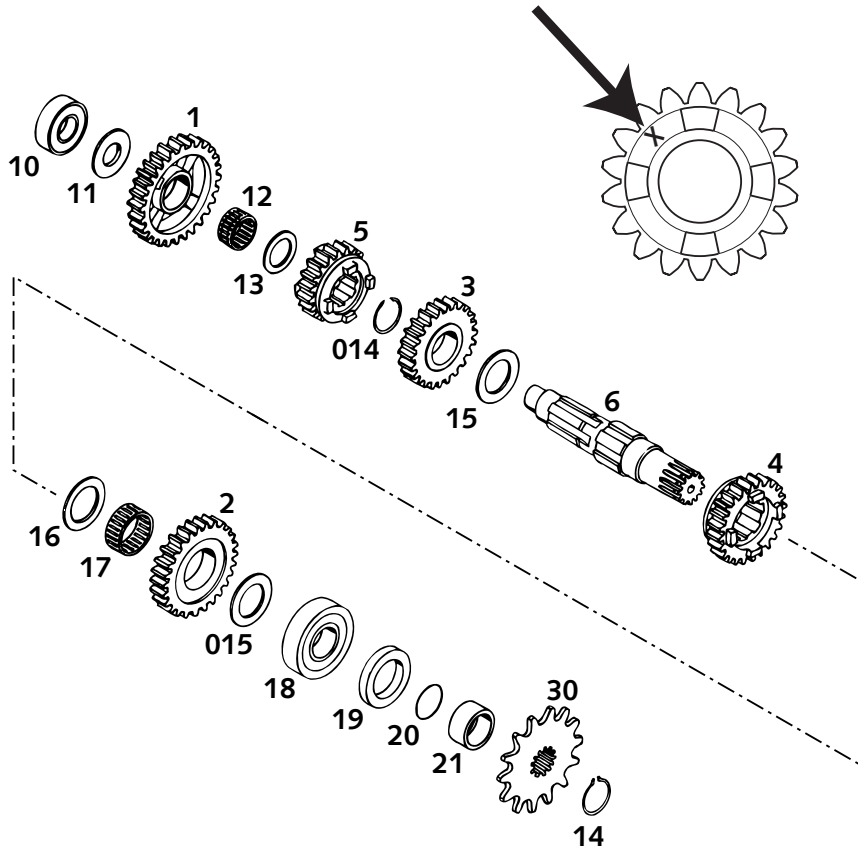


FIG	TEILNR/PARTNR	BEZEICHNUNG	DESCRIPTION	QTY
1	546.33.005.000	LOSRAD 1.G 29-Z SX/GS „430“	1ST GEAR COUNTERSH.29-T „430“	1
2	546.33.013.000	LOSRAD 2.G 27-Z SX 250 „450“ 250 SX/MXC	2ND GEAR COUNTERSH.27-T „450“ 250 SX/MXC	1
2	546.33.113.000	LOSRAD 2.G 26-Z „455“ 250-380 EXC,380SX,300/380 MXC	2ND GEAR COUNTERSH.26-T „455“ 250-380 EXC,380SX,300/380 MXC	1
3	546.33.009.000	LOSRAD 3.G 25-Z SX 250 „470“ 250 SX/MXC	3RD GEAR COUNTERSH.25-T „470“ 250 SX/MXC	1
3	546.33.009.100	LOSRAD 3.G 24-Z SX „472“ 380 SX, 300/380 MXC	3RD GEAR COUNTERSH.24 T „472“ 380 SX, 300/380 MXC	1
3	546.33.109.000	LOSRAD 3.G 22-Z GS „475“ 250-380 EXC	3RD GEAR COUNTERSH.22-T „475“ 250-380 EXC	1
4	546.33.011.000	SCHIEBERAD 4.G 23-Z SX „490“ 250/380 SX, 250/300/380 MXC	4TH GEAR COUNTERSH.23-T „490“ 250/380 SX, 250/300/380 MXC	1
4	546.33.111.000	SCHIEBERAD 4.G 20-Z GS „495“ 250-380 EXC	4TH GEAR COUNTERSH.20-T „495“ 250-380 EXC	1
5	546.33.007.300	SCHIEBERAD 5.G 21-Z SX „512“ 250/380 SX, 250/300/380 MXC	5TH GEAR COUNTERSH.21-T „512“ 250/380 SX, 250/300/380 MXC	1
5	546.33.107.300	SCHIEBERAD 5.G 18-Z GS „517“ 250-380 EXC	5TH GEAR COUNTERSH.18-T „517“ 250-380 EXC	1
6	546.33.003.400	ABTRIEBSWELLE	COUNTER SHAFT '93	1
10	0625 062031	RILLENKUGELLAGER 6203 TN9.C3	BALL BEARING 6203 TN9.C3	1
11	546.33.018.000	ANLAUFSCHIEBE 17,2X34X1,5	STOP DISK 17,2X34X1,5	1
12	565.33.099.000	NADELKRANZ K22X26X13 GETEILT	NEEDLE BEAR. K22X26X13 DIVIDED	1
13	546.33.017.000	ANLAUFSCHIEBE 22,2X33X1,5	STOP DISK 22,2X33X1,5	1
14	520.33.096.000	SICH.RING DIN0471-25X1,64SD	LOCK RING DIN0471-25X1,64SD	1
014	546.33.196.000	AXIALSICHERUNG 25X2,0	AXIAL CIRCLIP 25X2,0	1
15	546.33.020.400	ANLAUFSCHIEBE 26.1X40X1,5	STOP DISK 26X40X1,5	1
015	546.33.020.000	ANLAUFSCHIEBE 25,7X40X1,5	STOP DISK 25,7X40X1,5	1
16	546.33.019.000	ANLAUFSCHIEBE 28,2X40X1,5	STOP DISK 28,2X42X1,5	1
17	546.33.098.000	NADELKRANZ K 28X33X13 B	NEEDLE BEARING K 28X33X13 FV	1
18	0625 613742	RILLENKUGELLAGER 613742 C4	BALL BEARING 613742 C4	1
19	0760 324271	WELLENDICHTRING 32X42X7 BSL	SHAFT SEAL RING 32X42X7 BSL	1
20	0770 250020	O-RING 25,00X2,00 NBR 70	O-RING 25,00X2,00 NBR 70	1
21	546.33.014.100	DISTANZBÜCHSE 12MM	SPACER BUSHING 12 MM	1
30	500.33.029.013	KETTENRAD 13-Z	SPROCKET 13-T	1
30	500.33.029.014	KETTENRAD 14-Z	SPROCKET 14-T	1
30	500.33.029.015	KETTENRAD 15-Z	SPROCKET 15-T	1

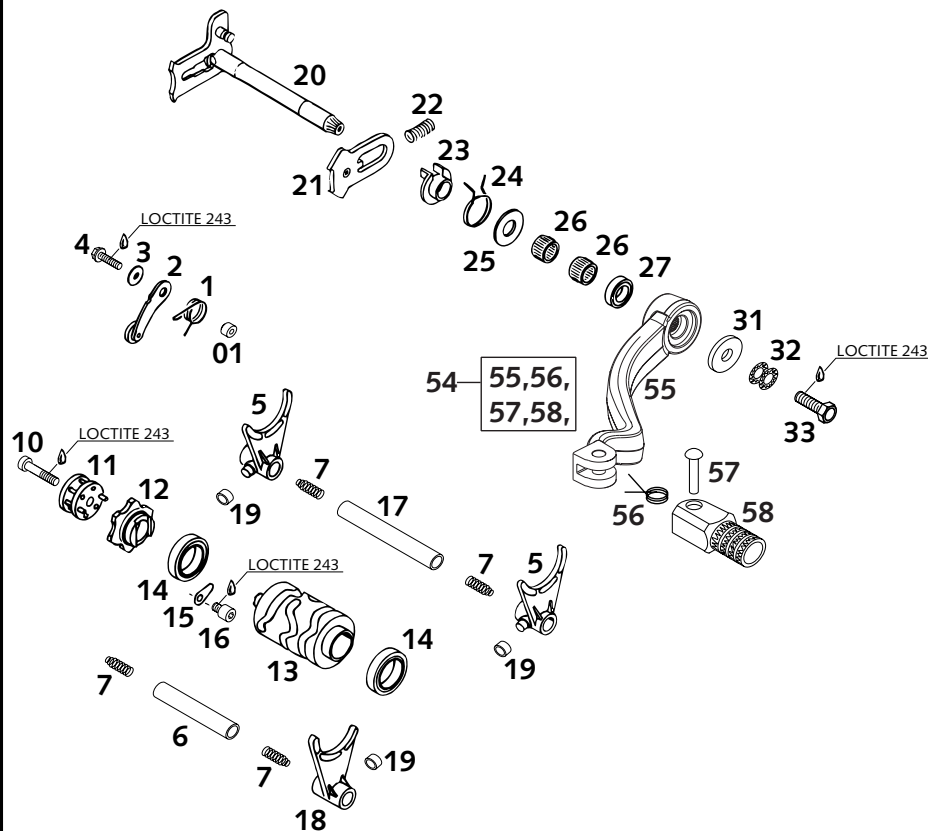


FIG	TEILNR/PARTNR	BEZEICHNUNG	DESCRIPTION	QTY
1	546.34.023.300	ARRETIERHEBELFEDER '96	LOCKING LEVER SPRING D=2,3MM'96	1
01	546.34.052.300	HÜLSE FÜR ARRETIERHEBEL	SLEEVE FOR LOCKING LEVER	1
2	546.34.024.144	ARRETIERHEBEL KPL. '96	LOCKING LEVER CPL '96	1
3	0021 050003	SCHEIBE DIN9021-A 5,3	WASHER DIN9021-A 5,3	1
4	0015 050203	SK.BUNDSCHRAUBE M 5X20 SW=8	HH COLLAR SCREW M 5X20 WS=8	1
5	547.34.002.000	SCHALTGABEL 1./3.GANG+2.G. '99	SHIFTING FORK 1./3.GEAR+2.G'99	2
6	547.34.019.000	SCHALTSCHIENE 75,8MM ANTR. '99	SHIFTING RAIL 75,8MM MAINS.'99	1
7	580.38.023.200	DRUCKFEDER 0,9MM	PRESSURE SPRING 0,9MM	4
10	0912 060303	ISK.SCHRAUBE DIN0912-M 6X30	AH SCREW DIN0912-M 6X30	1
11	546.34.013.044	WALZENMITNEHMER KPL.MIT NADELN	DRIVER F.SHIFT ROLLER W.NEEDLE	1
12	546.34.015.000	WALZENARRETIERUNG	LOCKING ROLLER	1
13	547.34.012.000	SCHALTWALZE 250-380 '99	SHIFT ROLLER 250-380 '99	1
14	0625 618050	RILLENKUGELLAGER 61805 C3	BALL BEARING 61805 C3	2
15	546.34.049.000	HALBLECH	RETAINING PLATE	2
16	0912 060083	ISK.SCHRAUBE DIN0912-M 6X 8	AH SCREW DIN0912-M 6X 8	2
17	547.34.020.000	SCHALTSCHIENE 96,8MM ABTR. '99	SHIFTING RAIL 96,8MM COUNT.'99	1
18	547.34.001.000	SCHALTGABEL 4./5.GANG '99	SHIFTING FORK 4./5.GANG '99	1
19	503.34.018.100	SCHALTROLLE 6X8X5,2 '98	SHIFTING ROLLER 6X8X5,2 '98	3
20	546.34.005.044	SCHALTWELLE KPL	SHIFTING SHAFT CPL	1
21	546.34.008.000	GLEITBLECH	SLIDING PLATE	1
22	565.34.013.100	SPANNFEDER 0,8MM	SPANNER SPRING 0,8MM	1
23	546.34.020.000	FEDERFÜHRUNG	SPRING GUIDE	1
24	546.34.014.100	RÜCKHOLFEDER 2,2MM '95	RETURN SPRING 2,2MM '95	1
25	546.34.050.000	ANLAUFSCHLEIBE 14X30X1	STOP DISK 14X30X1	1
26	546.32.095.000	NADELHÜLSE HK 1412 14,6X20X12	NEEDLE BEAR.HK 1412 14,6X20X12	2
27	0760 142460	WELLENDICHTRING 14X24X6 B	SHAFT SEAL RING 14X24X6 B	1
31	502.32.050.001	STAHSCHLEIBE 6X17X3	STEEL WASHER 6X17X3	1
32	502.33.041.000	NORDLOCK SCHEIBEN M6 (PAAR)	PAIR OF WASHERS M6 NORDLOCK	1
33	0933 060165	SK.SCHRAUBE DIN0933-M 6X16	HH SCREW DIN0933-M 6X16	1
54*	547.34.031.000	SCHALTHEBEL KPL. 2-TAKT 2001	SHIFT LEVER CPL. 2-STROKE 2001	1
56	546.34.032.100	SCHALTHEBELFEDER 250	SHIFTING LEVER SPRING 250	1
57	546.34.031.050	BOLZEN 6X25 FÜR SCHALTHEBEL	BOLT 6X25 FOR SHIFT LEVER	1
58	546.34.131.000	AUFTRITT FÜR SCHALTHEBEL 250	STEP PLATE FOR SHIFT LEVER	1

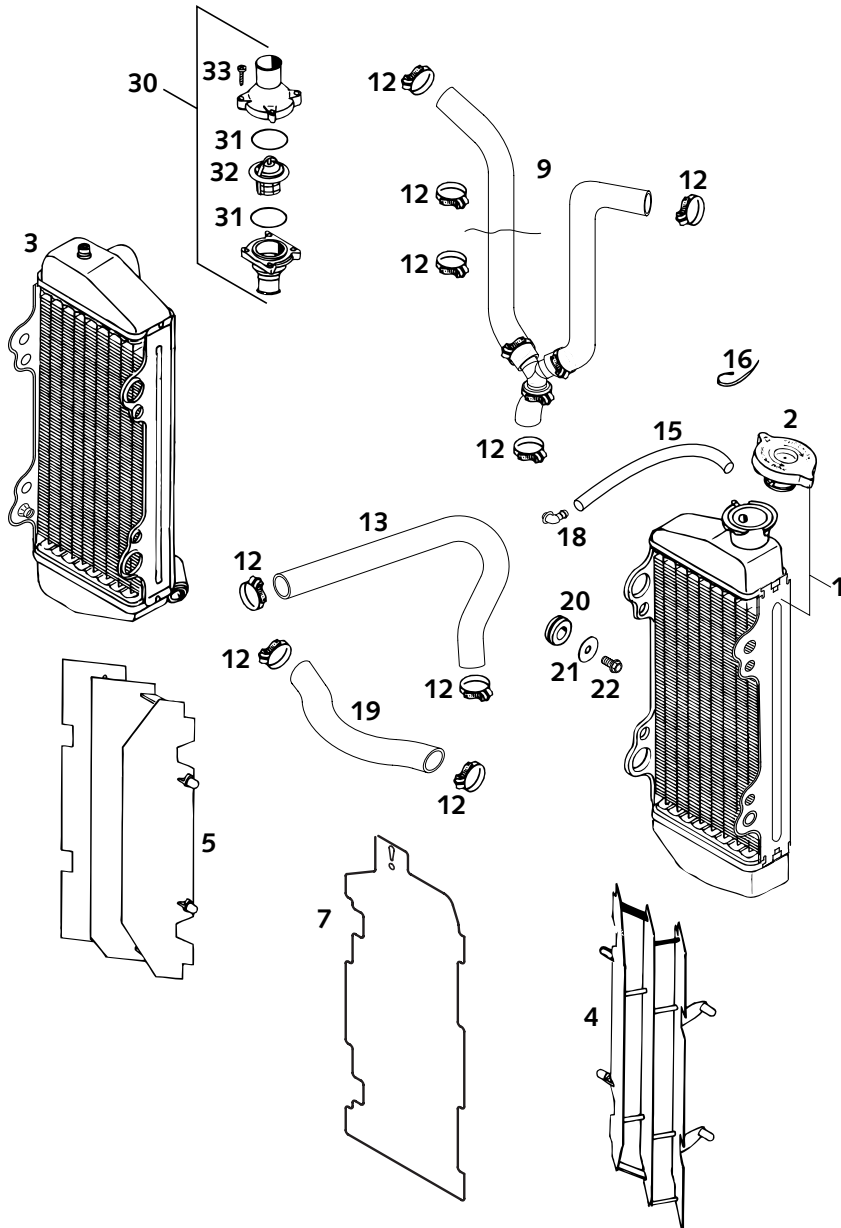


FIG	TEILNR/PARTNR	BEZEICHNUNG	DESCRIPTION	QTY
1	503.35.007.000	KÜHLER LINKS NATUR (45286) '98	RADIATOR L/S NATURE (45286)'98	1
2	580.35.016.000	KÜHLERVERSCHLUSS KLEIN 1,4 BAR	RADIATOR CAP SMALL 1,4 BAR	1
3	547.35.008.000	KÜHLER RECHTS NATUR (45287)'98	RADIATOR R/S NATURE (45287)'98	1
4	546.35.034.200	KÜHLERSCHUTZ LINKS FARBLOS '95	RADIATOR PROTECT. L/S WHITE'95	1
5	546.35.134.200	KÜHLERSCHUTZ RECHTS FARBLOS'95	RADIATOR PROTECT. R/S WHITE'95	1
7	503.35.033.000	ABDECKUNG F.KÜHLER LI. SCHWARZ FÜR WINTERBETRIEB	COVER FOR RADIATOR L/S BLACK FOR WINTER OPERATION	1
9	503.35.026.000	KÜHLERSCHLAUCH KPL. 125-380'98	RADIATOR HOSE CPL. 125-380'98	1
12	100.01.020.000	SCHLAUCHKLEMME GEMI 16/27	HOSE CLAMP GEMI 16/27	X
13	547.35.027.000	FORMSCHLAUCH 18X25 250-380'98	RADIATOR HOSE 18X25 250-380'98	1
15	550.07.016.001	SCHLAUCH 7X10 PER METER	PVC-HOSE 7X10 PER METER	0,2
16	440.11.076.200	KABELBAND 200MM	CABLE TIE 200MM	X
18	503.03.089.000	WINKELSTÜCK '97	ANGEL PIECE '97	1
19	547.35.025.000	FORMSCHLAUCH 18X25 250-380'98	RADIATOR HOSE 18X25 250-380'98	1
20	410.01.052.000	KABELTÜLLE D=12MM	RUBBER SLEEVE D=12MM	4
21	0021 060003	SCHEIBE DIN9021-A 6,4	WASHER DIN9021-A 6,4	4
22	0015 060123	SK.BUNDSCHRAUBE M 6X12 SW=8	HH COLLAR SCREW M 6X12 WS=8	4
30	546.35.013.144	THERMOSTATGEH. KPL. 55GRAD '98	THERMOSTATCASE CPL. 55DEG. '98	1
31	0770 320020	O-RING 32,00X2,00	O-RING 32,00X2,00	2
32	546.35.017.000	THERMOSTAT 55 GRAD '94	THERMOSTAT 55 DEGREES '94	1
33	0016 040183	KUNSTSTOFFSCHR. KB40X18 WN1412	PLASTIC SCREW KB40X18 WN1412	4

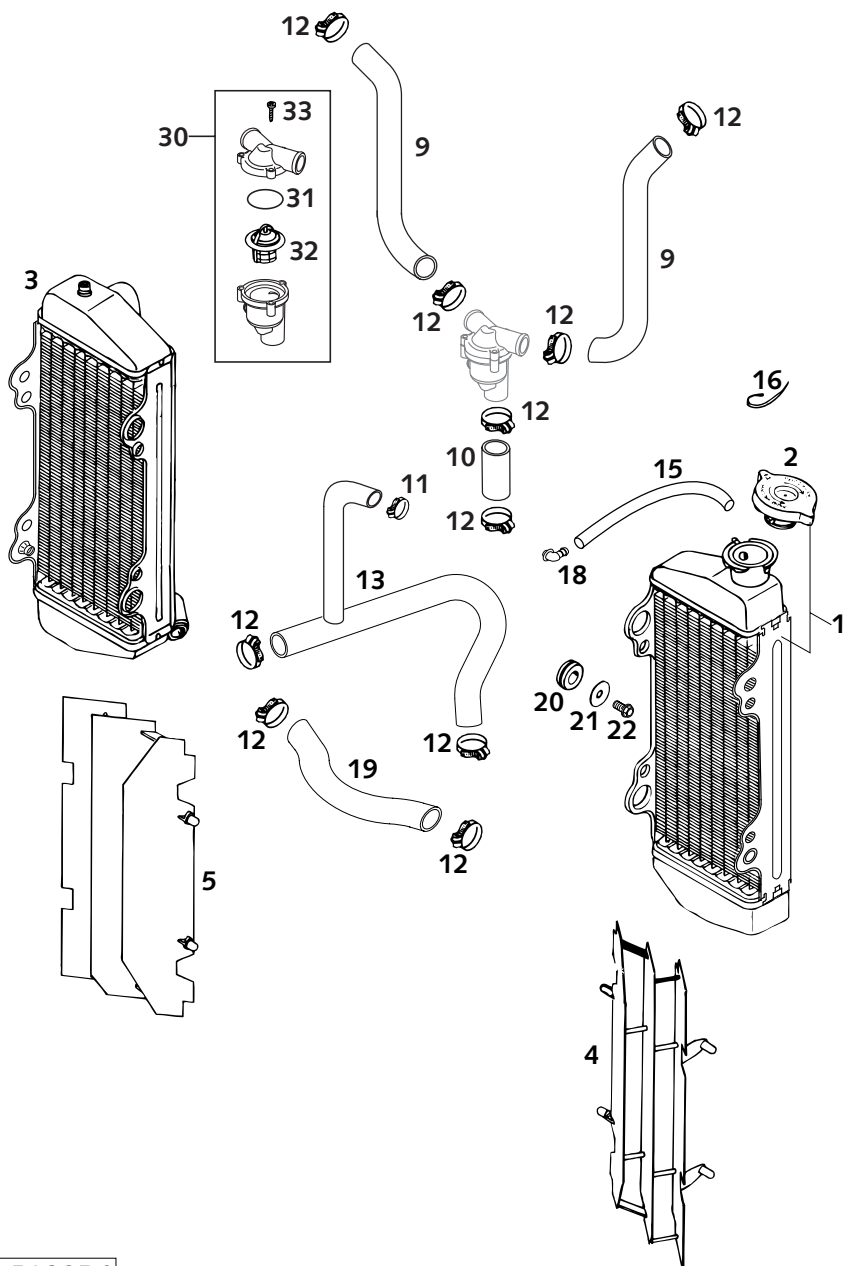
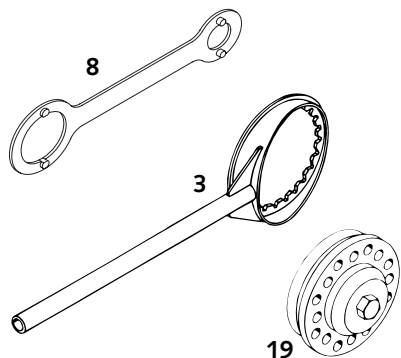
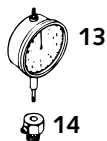
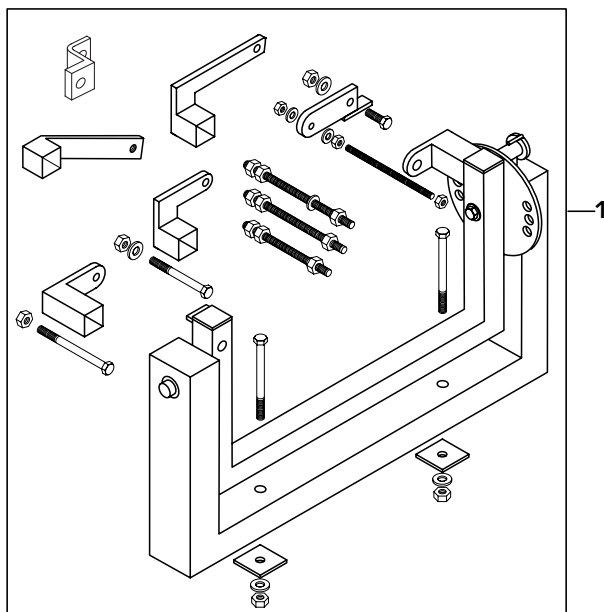


FIG	TEILNR/PARTNR	BEZEICHNUNG	DESCRIPTION	QTY
1	503.35.007.000	KÜHLER LINKS NATUR (45286) '98	RADIATOR L/S NATURE (45286)'98	1
2	580.35.016.000	KÜHLERVERSCHLUSS KLEIN 1,4 BAR	RADIATOR CAP SMALL 1,4 BAR	1
3	547.35.008.000	KÜHLER RECHTS NATUR (45287)'98	RADIATOR R/S NATURE (45287)'98	1
4	546.35.034.200	KÜHLERSCHUTZ LINKS FARBLOS '95	RADIATOR PROTECT. L/S WHITE'95	1
5	546.35.134.200	KÜHLERSCHUTZ RECHTS FARBLOS'95	RADIATOR PROTECT. R/S WHITE'95	1
9	503.35.026.100	KÜHLERFORMSCHLAUCH 125/200'99	RADIATOR HOSE 125/200'99	2
10	565.35.025.001	KÜHLERSCHLAUCH 18X25 PER MET.	RADIATOR HOSE 18X25 PER METER	0,05
11	583.35.099.000	SCHLAUCHBINDER GEMI 10-16	HOSE CLAMP GEMI 10-16	1
12	100.01.020.000	SCHLAUCHKLEMME GEMI 16/27	HOSE CLAMP GEMI 16/27	10
13	547.35.027.100	FORMSCHLAUCH WAPU-KÜHLER '99	PREFORMED HOSE WAPU-RADIATOR	1
15	550.07.016.001	SCHLAUCH 7X10 PER METER	PVC-HOSE 7X10 PER METER	0,2
16	440.11.076.200	KABELBAND 200MM	CABLE TIE 200MM	X
18	503.03.089.000	WINKELSTÜCK '97	ANGEL PIECE '97	1
19	547.35.025.000	FORMSCHLAUCH 18X25 250-380'98	RADIATOR HOSE 18X25 250-380'98	1
		KÜHLER - KÜHLER	RADIATOR - RADIATOR	
20	410.01.052.000	KABELTÜLLE D=12MM	RUBBER SLEEVE D=12MM	4
21	0021 060003	SCHEIBE DIN9021-A 6,4	WASHER DIN9021-A 6,4	4
22	0015 060123	SK.BUNDSCHRAUBE M 6X12 SW=8	HH COLLAR SCREW M 6X12 WS=8	4
30	547.35.013.044	THERMOSTATGEH.KPL. 55GR EGS'99	THERMO.CASE CPL. 55DG EGS'99	1
31	0770 320020	O-RING 32,00X2,00	O-RING 32,00X2,00	1
32	546.35.017.000	THERMOSTAT 55 GRAD '94	THERMOSTAT 55 DEGREES '94	1
33	0016 040183	KUNSTSTOFFSCHR. KB40X18 WN1412	PLASTIC SCREW KB40X18 WN1412	3



HOLZGABEL
SELBSTGEFERTIGT
WOODEN FORK PLATE
HOME MADE

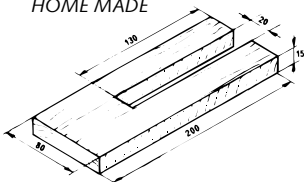


FIG	TEILNR/PARTNR	BEZEICHNUNG	DESCRIPTION	QTY
1	560.12.001.000	UNIVERSALMONTAGEBOCK '96	UNIVERSAL MOUNTING RACK '96	1
3	546.29.003.000	KUPPLUNGSHALTER 250'90	CLUTCH HOLDER 250 '90	1
4	560.12.004.000	ZAHNRADSEGMENT	GEAR WHEEL SEGMENT	1
5	546.29.009.044	MAGNETABZIEHER M27X1 KOKUSAN	MAGNETIC PULLER M27X1 KOKUSAN	1
7	510.12.011.000	SEEGERRINGZANGE VERKEHRT	SPECIAL CIRCLIP PLIER	1
8	546.29.012.100	HALTESCHLÜSS. ROTOR 2K-1/2/3/4	HOLD. SPANNER ROTOR 2K-1/2/3/4	1
9	510.12.014.000	GRADSCHIEBE	TIMING DEGREE DISC	1
10	510.12.016.000	SCHUTZKAPPE F. KURBELWELLE M12	PROTECTION CAP CRANKSHAFT M12	1
13	501.12.013.000	MESSUHR 0-10 MM	DIAL GAUGE 0-10MM	1
14	501.12.030.000	MESSUHRHALTER	DIAL GAUGE SUPPORT	1
15	584.29.059.000	LOCTITE 648 GRÜN 20ML	LOCTITE 648 GREEN 20ML	1
16	6 899 785	LOCTITE 242 BLAU 6CCM	LOCTITE 242 BLUE 6CCM	1
19	546.29.027.000	NIEWERKZEUG FÜR KUPPLUNG	RIVETTING TOOL FOR CLUTCH	1

TECHNISCHE DATEN – MOTOR 250/300/380 SX / EXC 2001 (außer USA)

Motor	250 SX	250 EXC	300 EXC	380 SX	380 EXC
Bauart	Flüssigkeitsgekühlter Einzylinder-Zweitakt-Ottomotor mit KTM Twin Valve Control Auslaßsteuersystem und KTM Torque Chamber				
Hubraum	249 cm ³		297 cm ³	368 cm ³	
Bohrung / Hub	66,4 / 72 mm		72 / 73 mm	78 / 77 mm	
Kraftstoff	Superkraftstoff ROZ 95 bleifrei, mit hochwertigem Zweitaktöl gemischt (Shell Advance Racing X)				
Mischungsverhältnis	1:40 – 1:60 bei Verwendung von hochwertigen Zweitaktölen. Im Zweifelsfall setzen Sie sich bitte mit Ihrem Importeur in Verbindung oder mischen Sie vorsichtshalber 1:40				
Kurbelwellenlagerung	1 Rillenkugellager / 1 Zylinderrollenlager				
Pleuellager	Nadellager				
Kolbenbolzenlager	Nadellager				
Kolben	Gußkolben		Schmiedekolben	Gußkolben	
Kolbenring	1 Rechteckring		2 Rechteckringe		
Maß "X" <small>(Kolbenoberkante-Zylinderoberkante)</small>	0 + 0,1 mm				
Zündzeitpunkt	2,2 mm (19 Grad) vor OT	2,0 mm (17 Grad) vor OT		2,2 mm (17 Grad) vor OT	
Zündkerze	NGK BR 8 ECM				
Elektrodenabstand	0,60 mm				
Maß "Z" <small>(Höhe der Steuerklappe)</small>	49,5 mm		46 mm	50,5 mm	
TVC Verstellbeginn	5000/min		5900/min	5200/min	
TVC Verstellende	7000/min		7750/min	7200/min	
Primärtrieb	Gerade verzahnte Stirnräder, Primärübersetzung 25:72			Gerade verzahnte Stirnräder, Primärübersetzung 26:72	
Kupplung	Mehrscheibenkupplung im Ölbad, hydraulisch betätigt (Shell HF-E15)				
Getriebe	Klauengeschaltetes 5-Gang-Getriebe				
Getriebeübersetzung					
1. Gang	15:29		15:29	15:29	15:29
2. Gang	17:27		18:26	18:26	18:26
3. Gang	19:25		19:22	19:24	19:22
4. Gang	21:23		21:20	21:23	21:20
5. Gang	23:21		23:18	23:21	23:18
Getriebeschmierung	0,8 l Motoröl 20W-40 (Shell Advance VSX4)	0,8 l Motoröl 80W (Shell Gear EP 80)		0,8 l Motoröl 20W-40 (Shell Advance VSX4)	0,8 l Motoröl 80W (Shell Gear EP 80)
Lieferbare Kettenritzel	13Z / 14Z / 15Z für Kette $\frac{5}{8} \times \frac{1}{4}$ "				
Kühlflüssigkeit	1,3 Liter, Mischungsverhältnis 40 % Frostschutz, 60 % Wasser, mindestens -25° C				
Zündanlage	KOKUSAN 2K-4	KOKUSAN 2K-3		KOKUSAN 2K-3	KOKUSAN 2K-3
Generatorleistung	kein Generator	12V 110W		kein Generator	12V 110W
Vergaser	Flachschieber-Vergaser, Einstellung siehe Tabelle 3				
Luftfilter	Schaumstoff-Naßluftfilter-Einsatz				

TOLERANZEN-EINBAUSPIELE	
Kolbeneinbauspiel	0,05 mm (250) 0,06 mm (300) 0,08 mm (380)
Kolbenring – Stoßspiel	0,3–0,4 mm
Pleuellager – Radialspiel	0,021–0,032 mm
Getriebewellen – Axialspiel	0,1–0,2 mm
Kupplungsdruckfedern – Länge	Ø 2,5 neu = 43 mm, Mindestlänge = 42 mm

DICHTUNGSSTÄRKEN	
Motorgehäuse	0,5 mm
Kupplungsdeckel	0,5 mm
Zylinderfußdichtung	nach Bedarf
Lieferbare Fußdichtungen	0,2/0,4/0,5/0,75 mm
Zylinderkopfdichtung	O-Ringe

ANZUGSDREHMOMENTE		
Bundschrauben-Zylinderkopf	M 8	35 Nm
Bundmuttern-Zylinderfuß	M 10	35 Nm
Bundmutter-Schwungrad	M 12x1	60 Nm
Senkschraube Anschlagblech Kickstarter	M 6x16	Loctite 648 19 Nm
Mutter für Primärrad (Linksgewinde)	M 18x1,5	Loctite 243 150 Nm
Mutter für Kupplungsmitnehmer	M 18x1,5	Loctite 243 100 Nm
Motorgehäuse und Deckelschrauben	M 6	8 Nm
Schwingarmbolzen	M 14	100 Nm
Restliche Schrauben	M 6	10 Nm
	M 8	25 Nm
	M 10	45 Nm

VERGASER-GRUNDEINSTELLUNG								
TABELLE 3		250 SX	380 SX	250/300 EXC gedrosselt	250 EXC AUS gedrosselt	300 EXC AUS gedrosselt	380 EXC gedrosselt	
	Vergasertyp	Keihin PWK 38 AG PJ	Keihin PWK 38 AG	Keihin PWK 38 AG	Keihin PWK 38 AG	Keihin PWK 38 AG	Keihin PWK 38 AG	Keihin PWK 38 AG
	Regulierungsnummer	010300	070300	020300	040300	060300	080300	
	Hauptdüse	172 (170,175)	170 (168,172)	175 (172,178,180)	178 (175,180)	175 (172,178)	170 (168,172)	
	Leerlaufdüse	48 (45,50)	45 (48)	35	45 (48)	45 (48)	45 (48)	
	Startdüse	85	85	85	85	85	85	
	Düsennadel	NOZ E (NOZ F)	NOZ G (NOZ I/NOZ H)	R 1475 J	NOZ G (NOZ H)	NOZ H (NOZ I)	NOZ G (NOZ I/NOZ H)	
	Nadelposition von oben	III	III	III	IV	III	III	
	Schieber	7	6,5	6,5	6,5	6,5	6,5	
	Luftregulierschr. offen	1,5	1,5	1,5	1,5	1,5	1,5	
Drosselung	–	–	Schieberanschlag 34mm	Schieberanschlag 34mm	Schieberanschlag 34mm	Schieberanschlag 36mm		
Power Jet Düse	55	–	–	–	–	–		

TECHNICAL DATA - ENGINE 250/300/380 SX / MXC / EXC 2001 (only USA)

Engine	250 SX	250 EXC, MXC	300 EXC, MXC	380 SX	380 EXC, MXC		
Design	Liquid-cooled single-cylinder two-stroke engine with KTM Twin Valve Control exhaust system and KTM Torque Chamber						
Piston displacement	249 ccm		297 ccm		368 ccm		
Bore / stroke	66.4 / 72 mm (2.62 / 2.84 in)		72 / 73 mm (2.84 / 2.88 in)		78 / 77 mm (3 / 2.98 in)		
Fuel	unleaded SUPER fuel, research octane no 95, mixed with high-grade two stroke oil (Shell Advance Racing X)						
Oil / gasolin ratio	1:40 – 1:60 when using high grade two stroke oil. When in doupt, please contact your importer or use 1:40 mix ratio to be on the safe side						
Crankshaft bearing	1 deep-groove ball bearing / 1 cylinder roller bearing						
Connecting rod bearing	needle bearing						
Piston pin bearing	needle bearing						
Piston	cast piston		forged piston		cast piston		
Piston ring	one plain compression rings		two plain compression rings				
Dimension "X" <small>(upper edge piston - upper edge cylinder)</small>	0 +0.1 mm (0 + 0.004 in)						
Ignition timing	2.2 mm (0.09 in) (19 °) BTDC	2.0 mm (0.07 in) (17 °) BTDC		2.2 mm (0.09 in) (17 °) BTDC			
Spark plug	NGK BR 8 ECM						
Electrode gap	0.6 mm (0.024 in)						
Dimension "Z" <small>(height of the control flap)</small>	49,5 mm (1.95 in)		46 mm (1.7 in)		50.5 mm (1.99 in)		
TVC start open	5000/min		5900/min		5200/min		
TVC fully open	7000/min		7750/min		7200/min		
Primary drive	straight cut spur gears, primary ratio 25:72			straight cut spur gears, primary ratio 26:72			
Clutch	multiple disc clutch in oil bath, hydraulic operated (Shell HF-E15)						
Transmission	5 speed, claw actuated						
Gear ratio		EXC	MXC	EXC	MXC	EXC	MXC
1 st Gear	15:29	15:29	15:29	15:29	15:29	15:29	15:29
2 nd Gear	17:27	18:26	17:27	18:26	18:26	18:26	18:26
3 rd Gear	19:25	19:22	19:25	19:22	19:24	19:22	19:24
4 th Gear	21:23	21:20	21:23	21:20	21:23	21:20	21:23
5 th Gear	23:21	23:18	23:21	23:18	23:21	23:18	23:21
Gear lubrication	0,8 l engine oil 20W-40 (Shell Advance VSX4)	0,8 l engine oil 80W (Shell Gear EP 80)		0,8 l engine oil 20W-40 (Shell Advance VSX4)	0,8 l engine oil 80W (Shell Gear EP 80)		
Available chain sprockets	13t / 14t / 15t for chain $\frac{5}{8} \times \frac{1}{4}$ "						
Coolant	1.3 litres, 40% anti freeze, 60% water, at least -25 °C (-13 °F)						
Ignition system	KOKUSAN 2K-4	KOKUSAN 2K-2		KOKUSAN 2K-3	KOKUSAN 2K-3		
Generator output	no generator	12V 40W		no generator	12V 110W		
Carburetor	flat-slide carburetor, carburetor setting see table 3						
Air-filter	wet foam type air filter insert						

TOLERANCES AND FITTING CLEARANCES	
Piston fitting clearance	0.05 mm (250) 0.06 mm (300) 0.08 mm (380)
Piston ring end gap	0.3–0.4 mm
Connecting rod bearing - radial clearance	0.021–0.032 mm
Transmission shafts end float	0.1–0.2 mm
Clutch springs - length	Ø 2.5 new = 43 mm, minimum length = 42 mm

GASKET THICKNESSES	
Crankcase	0.5 mm
Clutch cover	0.5 mm
Cylinder bottom gasket	as required
Available cylinder bottom gaskets	0.2/0.4/0.5/0.75 mm
Cylinder-head gasket	O-rings

TIGHTENING TORQUES		
Flange bolts - cylinder-head	M 8	35 Nm (25 ft.lb)
Nuts-cylinder base	M 10	35 Nm (25 ft.lb)
Flywheel collar nut	M 12x1	60 Nm (44 ft.lb)
Nut for primary sprocket (LH thread)	M 18x1.5	Loctite 243 150 Nm (110 ft.lb)
Nut for inner clutch hub	M 18x1.5	Loctite 243 100 Nm (74 ft.lb)
Crankcase and cover bolts	M 6	8 Nm (6 ft.lb)
Swingarm pivot	M 14	100 Nm (74 ft.lb)
Flat head screw release plate kickstarter	M 6x16	Loctite 648 19 Nm (14 ft.lb)
Other screws	M 6	10 Nm (7 ft.lb)
	M 8	25 Nm (19 ft.lb)
	M 10	45 Nm (33 ft.lb)

BASIC CARBURETOR SETTING					
TABLE 3		250 SX	250 MXC, EXC	300 MXC, EXC	380 SX, MXC, EXC
	Carburetor	Keihin PWK 38 AG PJ	Keihin PWK 38 AG	Keihin PWK 38 AG	Keihin PWK 38 AG
	Carburetor setting number	010300	030300	050300	070300
	Main jet	172 (170,175)	178 (175,180)	175 (172,178)	170 (168,172)
	Idling jet	48 (45,50)	45 (48)	45 (48)	45 (48)
	Starting jet	85	85	85	85
	Jet needle	NOZ E (NOZ F)	NOZ G (NOZ H)	NOZ H (NOZ I)	NOZ G (NOZ I/NOZ H)
	Needle position from top	III	IV	III	III
	Throttle valve	7	6,5	6,5	6,5
	Air adjustment screw open	1,5	1,5	1,5	1,5
Performance restrictor	-	-	-	-	
Power jet jet	55	-	-	-	

TECHNICAL DATA - ENGINE 250/300/380 SX / EXC 2001 (all models out of USA)

Engine	250 SX	250 EXC	300 EXC	380 SX	380 EXC
Design	Liquid-cooled single-cylinder two-stroke engine with KTM Twin Valve Control exhaust system and KTM Torque Chamber				
Piston displacement	249 ccm		297 ccm	368 ccm	
Bore / stroke	66.4 / 72 mm (2.62 / 2.84 in)		72 / 73 mm (2.84 / 2.88 in)	78 / 77 mm (3 / 2.98 in)	
Fuel	unleaded SUPER fuel, research octane no 95, mixed with high-grade two stroke oil (Shell Advance Racing X)				
Oil / gasoline ratio	1:40 – 1:60 when using high grade two stroke oil. When in doubt, please contact your importer or use 1:40 mix ratio to be on the safe side				
Crankshaft bearing	1 deep-groove ball bearing / 1 cylinder roller bearing				
Connecting rod bearing	needle bearing				
Piston pin bearing	needle bearing				
Piston	cast piston		forged piston	cast piston	
Piston ring	one plain compression rings	two plain compression rings			
Dimension "X" <small>(upper edge piston - upper edge cylinder)</small>	0 + 0.1 mm (0 + 0.004 in)				
Ignition timing	2.2 mm (0.09 in) (19 °) BTDC	2.0 mm (0.07 in) (17 °) BTDC		2.2 mm (0.09 in) (17 °) BTDC	
Spark plug	NGK BR 8 ECM				
Electrode gap	0.6 mm (0.024 in)				
Dimension "Z" <small>(height of the control flap)</small>	49,5 mm (1.95 in)		46 mm (1.7 in)	50.5 mm (1.99 in)	
TVC start open	5000/min		5900/min	5200/min	
TVC fully open	7000/min		7750/min	7200/min	
Primary drive	straight cut spur gears, primary ratio 25:72			straight cut spur gears, primary ratio 26:72	
Clutch	multiple disc clutch in oil bath, hydraulic operated (Shell HF-E15)				
Transmission	5 speed, claw actuated				
Gear ratio					
1 st Gear	15:29		15:29	15:29	15:29
2 nd Gear	17:27		18:26	18:26	18:26
3 rd Gear	19:25		19:22	19:24	19:22
4 th Gear	21:23		21:20	21:23	21:20
5 th Gear	23:21		23:18	23:21	23:18
Gear lubrication	0,8 l engine oil 20W-40 (Shell Advance VSX4)	0,8 l engine oil 80W (Shell Gear EP 80)		0,8 l engine oil 20W-40 (Shell Advance VSX4)	0,8 l engine oil 80W (Shell Gear EP 80)
Available chain sprockets	13t / 14t / 15t for chain $\frac{5}{8} \times \frac{1}{4}$ "				
Coolant	1.3 litres, 40% anti freeze, 60% water, at least -25 °C (-13 °F)				
Ignition system	KOKUSAN 2K-4	KOKUSAN 2K-3		KOKUSAN 2K-3	KOKUSAN 2K-3
Generator output	no generator	12V 110W		no generator	12V 110W
Carburetor	flat-slide carburetor, carburetor setting see table 3				
Air-filter	wet foam type air filter insert				

TOLERANCES AND FITTING CLEARANCES	
Piston fitting clearance	0.05 mm (250) 0.06 mm (300) 0.08 mm (380)
Piston ring end gap	0.3–0.4 mm
Connecting rod bearing - radial clearance	0.021–0.032 mm
Transmission shafts end float	0.1–0.2 mm
Clutch springs - length	∅ 2.5 new = 43 mm, minimum length = 42 mm

GASKET THICKNESSES	
Crankcase	0.5 mm
Clutch cover	0.5 mm
Cylinder bottom gasket	as required
Available cylinder bottom gaskets	0.2/0.4/0.5/0.75 mm
Cylinder-head gasket	O-rings

TIGHTENING TORQUES		
Flange bolts - cylinder-head	M 8	35 Nm (25 ft.lb)
Nuts-cylinder base	M 10	35 Nm (25 ft.lb)
Flywheel collar nut	M 12x1	60 Nm (44 ft.lb)
Nut for primary sprocket (LH thread)	M 18x1.5	Loctite 243 150 Nm (110 ft.lb)
Nut for inner clutch hub	M 18x1.5	Loctite 243 100 Nm (74 ft.lb)
Crankcase and cover bolts	M 6	8 Nm (6 ft.lb)
Swingarm pivot	M 14	100 Nm (74 ft.lb)
Flat head screw release plate kickstarter	M 6x16	Loctite 648 19 Nm (14 ft.lb)
Other screws	M 6	10 Nm (7 ft.lb)
	M 8	25 Nm (19 ft.lb)
	M 10	45 Nm (33 ft.lb)

BASIC CARBURETOR SETTING						
	250 SX	380 SX	250/300 EXC throttled	250 EXC AUS throttled	300 EXC AUS throttled	380 EXC throttled
Carburetor	Keihin PWK 38 AG PJ	Keihin PWK 38 AG	Keihin PWK 38 AG	Keihin PWK 38 AG	Keihin PWK 38 AG	Keihin PWK 38 AG
Carburetor setting number	010300	070300	020300	040300	060300	080300
Main jet	172 (170,175)	170 (168,172)	175 (172,178,180)	178 (175,180)	175 (172,178)	170 (168,172)
Idling jet	48 (45,50)	45 (48)	35	45 (48)	45 (48)	45 (48)e
Starting jet	85	85	85	85	85	85
Jet needle	NOZ E (NOZ F)	NOZ G (NOZ I/NOZ H)	R 1475 J	NOZ G (NOZ H)	NOZ H (NOZ I)	NOZ G (NOZ I/NOZ H)
Needle position from top	III	III	III	IV	III	III
Throttle valve	7	6,5	6,5	6,5	6,5	6,5
Air adjustment screw open	1,5	1,5	1,5	1,5	1,5	1,5
Performance restrictor	–	–	slide stop 34mm	slide stop 34mm	slide stop 34mm	slide stop 36mm
Power jet jet	55	–	–	–	–	–



NOTIZEN

NOTE

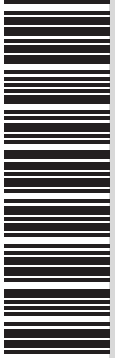


NOTIZEN

NOTE



KTM SPORTMOTORCYCLE AG
5230 Mattighofen
Austria
Internet: www.ktm.at



320815